

SHOGYO INTERNATIONAL CORPORATION

Email: INFO@SHOGYO.COM Website: WWW.SHOGYO.COM

Tel: 516-921-9111 Fax: 516-921-3777

Model No. :2255(RoHS)

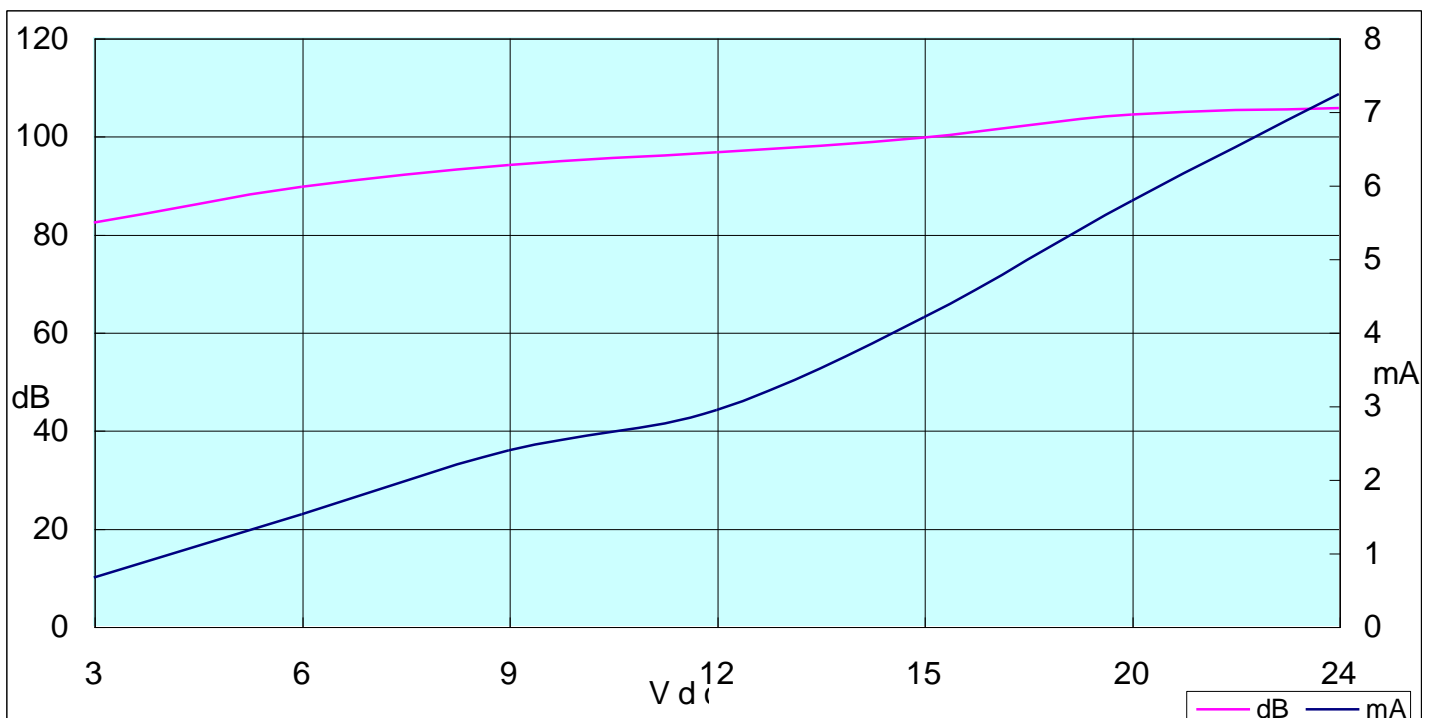
DATE:2006.05.20

1 . Electrical Characteristics

VER .:0

Oscillation Frequency (KHz)	3.5 ±0.5
Operating Voltage (Vdc)	3 ~ 24
Rated Voltage (Vdc)	12
Current Consumption (mA/max.)	10 at Rated Voltage
Sound Pressure Level (dB/min.)	95 at 30cm at Rated Voltage
Tone/Pulse Rate (Hz)	Constant + Fast Pulse 3.0 ±20%
Operating Temperature (°C)	-20 ~ +70
Storage Temperature (°C)	-30 ~ +80

2 . Voltage/ Current/ Sound Pressure



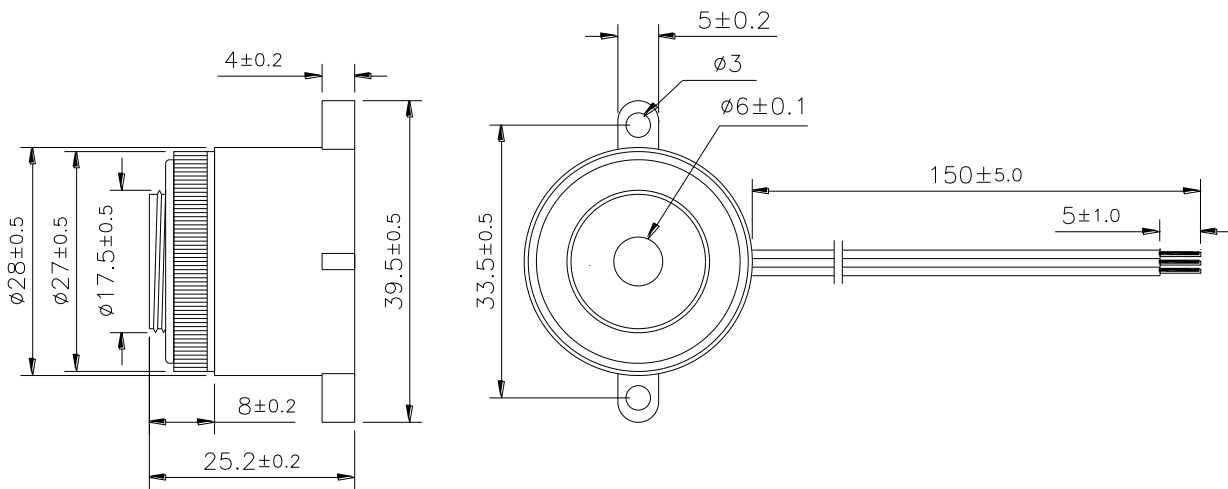
SHOGYO INTERNATIONAL CORPORATION

Email: INFO@SHOGYO.COM Website: WWW.SHOGYO.COM

Tel: 516-921-9111 Fax: 516-921-3777

3 . Dimensions and Material

3-1 Shape



Unit : mm

3-2 Material

Housing	ABS 707 UL94HB plastic resin (Color : Black)
Leading Wire	28 AWG
Weight (Gram)	9.8

SHOGYO INTERNATIONAL CORPORATION

Email: INFO@SHOGYO.COM Website: WWW.SHOGYO.COM

Tel: 516-921-9111 Fax: 516-921-3777

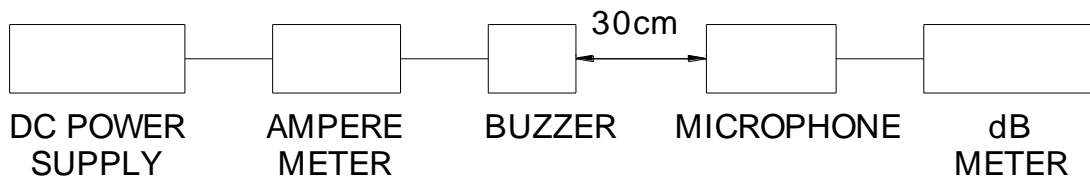
4. TESTING METHOD

• *Standard Measurement conditions*

Temperature: 25 ± 2 °C Humidity: 45-60%

• *Acoustic Characteristics*

The oscillation frequency, current consumption and sound pressure are measured by the measuring instruments shown below



In the measuring test, buzzer is placed as follows:



SHOGYO INTERNATIONAL CORPORATION

Email: INFO@SHOGYO.COM Website: WWW.SHOGYO.COM

Tel: 516-921-9111 Fax: 516-921-3777

5. RELIABILITY

ITEMS	METHOD OF TEST AND MEASUREMENTS	PERFORMANCE
<i>Coldness withstanding</i>	<i>After 98 hours of being exposed to -30 °C environment, should be returned to normal environment for 2 hours, then re-proceed to test.</i>	<i>No abnormality shall exist</i>
<i>Hotness withstanding</i>	<i>After 98 hours of being exposed to +80 °C environment, should be returned to normal environment for 2 hours, then re-proceed to test.</i>	<i>No abnormality shall exist</i>
<i>Humidity withstanding</i>	<i>After 98 hours of being exposed to 40 °C 95%RH environment in actual operation, should be returned to normal environment for 2 hours, then re-proceed to test.</i>	<i>No abnormality shall exist</i>
<i>Durability</i>	<i>Testing after 1,000 hours actual continuous operation.(at standard measurement conditions)</i>	<i>No abnormality shall exist</i>
<i>Drop withstanding</i>	<i>A natural drop from 75cm high down to the ground.</i>	<i>No abnormality shall exist</i>
<i>Vibration withstanding</i>	<i>Vibration of 2,000 cycles per minute, 2mm amplitude, applied in X, Y and Z directions for 30 minutes each.</i>	<i>No abnormality shall exist</i>

6. PACKAGEMETHOD

<1> One inner box consists of 80pcs.

<2> 10 inner boxes are packed in a carton box. (L*W*H=510*330*300mm)
(800pcs of 2255(RoHS) /9.0 kgs(N.W)/10.0 Kgs(G.W)/1.7 Cuft)