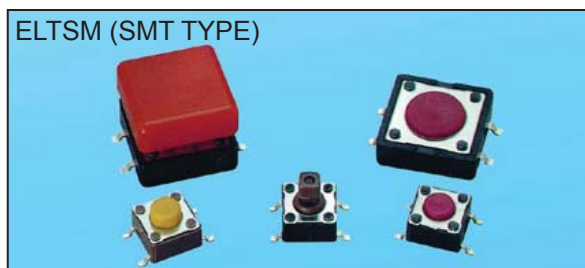
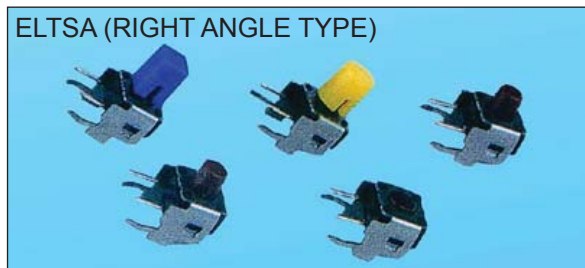
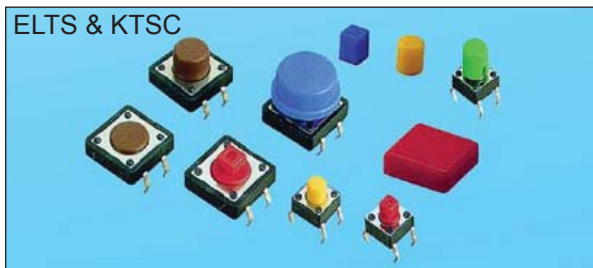


SPECIFICATIONS

RATING: 50mA, 12VDC
ELECTRICAL LIFE: 100,000 cycles (ELTS)
 1,000,000 cycles (EHTS)
 Please inquire our office
CONTACT RESISTANCE: 100mΩ max
INSULATION RESISTANCE: 100MΩ min. 500VDC
DIELECTRIC STRENGTH: 250VAC/1 min
OPERATION FORCE: 100gf, 160gf, 260gf, 320gf, 520gf
STORAGE TEMPERATURE: -30°C to +80°C
CONTACT ARRANGEMENT: 1 pole 1 throw

MATERIALS

COVER - Stainless steel or SPCC
BASE - UL94V-0 Nylon Thermoplastic(Black)
STEM - UL94V-0 Nylon Thermoplastic
CONTACT DISC - Phosphor bronze or stainless steel with silver cladding
TERMINAL - Brass with silver cladding
CAP - Thermoplastic ABS



HOW TO ORDER

ELTS □ □ - □ □ - □ □

Package Style <Only For ELTSM>:
 B= Tube
 T/R=Tape & Reel

RoHS code
 H= RoHS Compliant

Operation Force:
 ▲ K= 100gf N= 160gf
 ▲ Y= 520gf R= 260gf
 S= 320gf
 <▲12x12, K, Y Unavailable>

Dimension H:

CODE	ELTSA-6	ELTS-6/ELTSM-6/ELTSG-6	ELTSG2	ELTS-2/ELTSM-2
▲(SQ.)x2.4mm	1 3.15 mm	4.3 mm	1 4.3 mm	4.3 mm
	2 3.85 mm	5.0 mm	4 7.3 mm	7.3 mm
	3 5.85 mm	7.0 mm	(SQ.) x3.8 mm	(SQ.) x3.8 mm
	44 6.15 mm	7.3 mm	5	8.5mm
	5 8.35 mm	9.5 mm		
	6 11.85 mm	13.0 mm		

*If you need the other height option, please inquire our office

□ = None Post

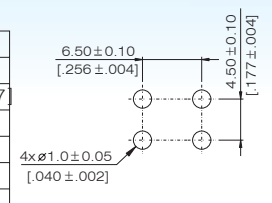
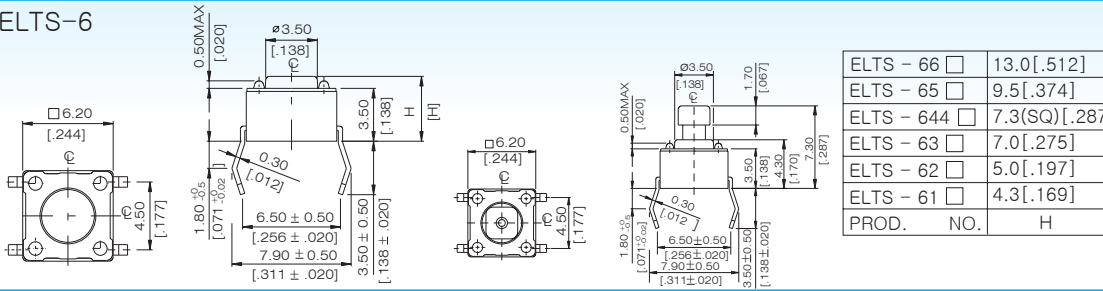
Prod Size:
 6= 6.2x6.2 mm
 ▲2= 12x12 mm
 <▲12x12 ELTSA Unavailable>

□ = Regular Type Tactile Switch
 A= Right Angle Type Tactile Switch
 G= With Ground Terminal Type Tactile Switch
 M= SMT Type Tactile Switch

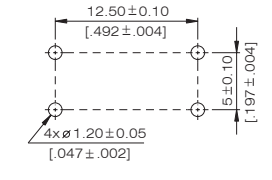
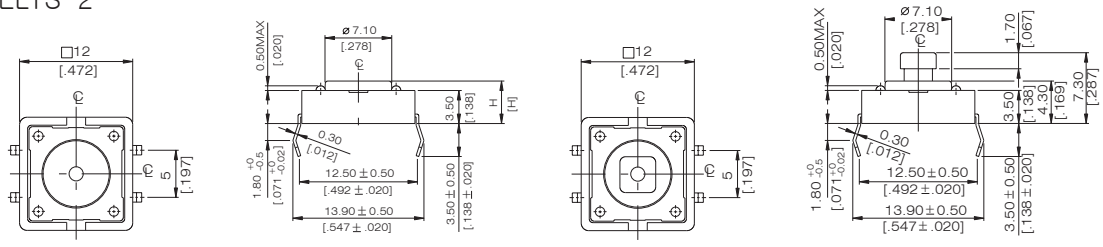
EL = 100,000 cycles
 EH = 1,000,000 cycles (only 6.2x6.2mm, 100gf, 160gf, 260gf, available)

INDEX
 TOGGLE
 ROCKER
 SLIDE
 PUSH BUTTON
 DIP
 TACT

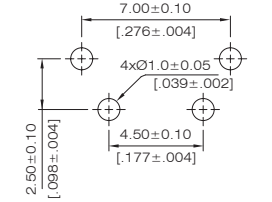
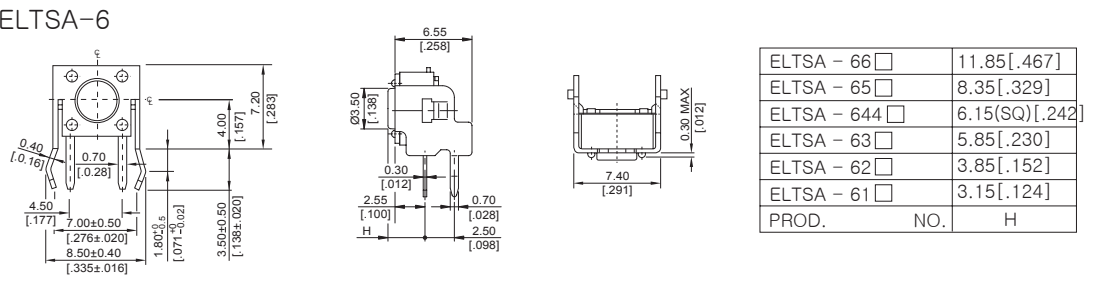
ELTS-6



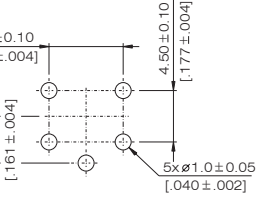
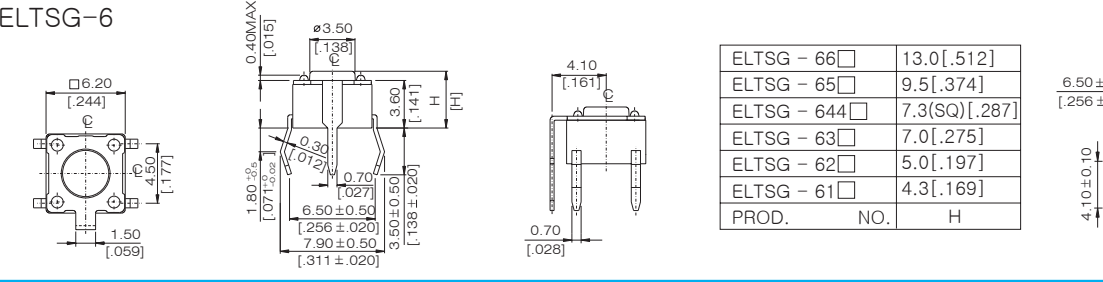
ELTS-2



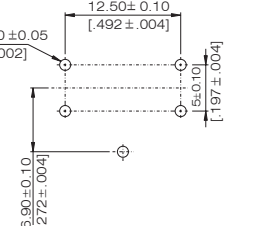
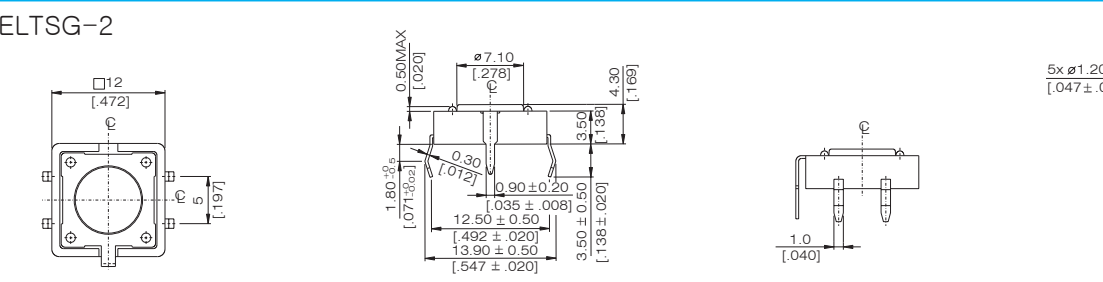
ELTSA-6



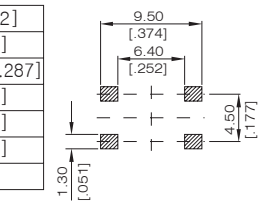
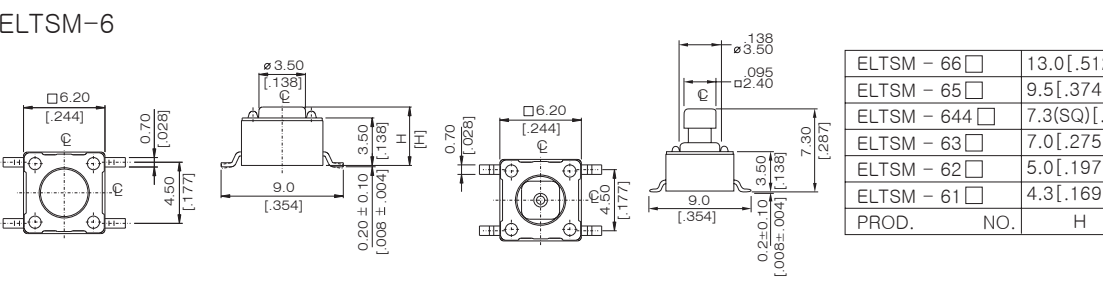
ELTSG-6



ELTSG-2



ELTSM-6



ELTSM-2

