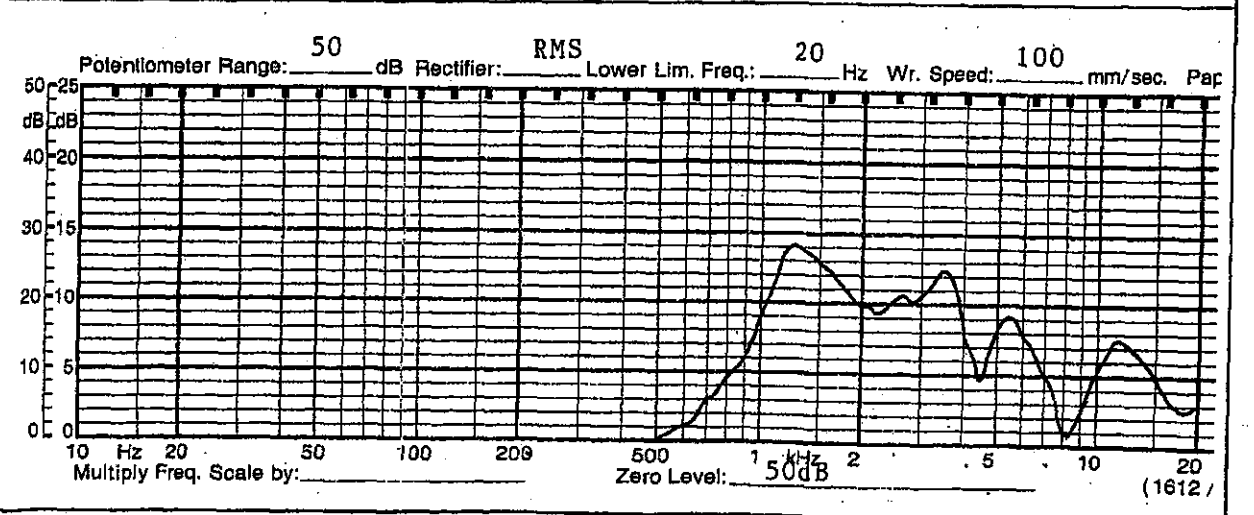
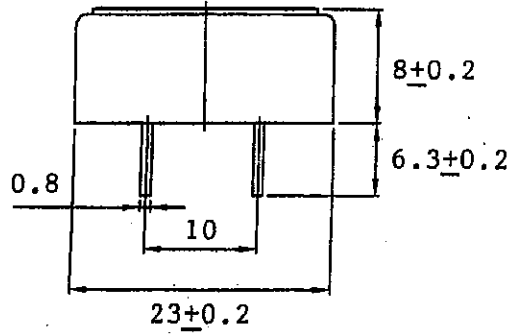
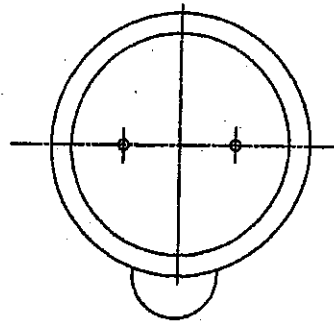


客 戶 CUSTOMER'S NAME		承 認 審 核 製 作
名 稱 MODEL	客戶機種名稱 CUSTOMER'S NO.	
	本廠機種名稱 OUR MODEL NO. <b>F23H-2X (ROHS)</b>	

1	口 徑 NOMINAL SIZE	23 mm. inch.
2	公稱阻 抗 IMPEDANCE	8 $\Omega \pm 15\%$ at. 1K Hz. 1 V.
3	最低共振週波數 RESONANCE FO	1200 Hz. $\pm$ 240 Hz. FO Hz. 1 V.
4	出力音壓 S.P. LEVEL	74 dB/w $\pm$ 3 dB
5	出力音壓週波數特性 RESPONSE	MAX 900 Hz~ 4K Hz 10 dB 0.1 w 50 cm average at 1.2K, 1.5K, 2K, 2.5K Hz.
6	交叉週波數 CROSSOVER FREQ.	Hz Hz dB/OCT Net work
7	許容入力 INPUT POWER	定格入力 最大入力 Nominal input 0.1 w. Handling Capacity 0.2 w.
8	動 作 OPERATION	Must be normal at program source 0.1 w.
9	聲音異常 BUZZ, RATTLE, ETC.	Must be normal at Since Wave 0.9 V.
10	磁束密度 FLUX DENSITY	Gauss $\pm$ 10%
11	總磁束 TOTAL FLUX	Max well min
12	磁 鐵 MAGNET	Size 6.5 x 1.5 mm gr oz
13	重 量 TOTAL WEIGHT	3.6 gr oz
14	連續負荷 LOAD TEST	After test meet Item 8 and 9 White noise 0.1 W. 24 Hours
15	失 真 率 DISTORTION	以 內 % MAX Hz W.
16	耐 熱 性 HEAT TEST	After test meet Item 8 and 9 60 $\pm$ 2 $^{\circ}$ C 20-50 %R. H 24 Hours
17	耐 濕 性 HUMIDITY TEST	After test meet Item 8 and 9 40 $\pm$ 2 $^{\circ}$ C 90-95 %R. H 24 Hours



**SHOGYO INTERNATIONAL CORP.**  
 6851 JERICHO TURNPIKE, SYOSSET, N.Y. 11791  
 TEL: (516) 921-9111 • FAX: (516) 921-3777  
 www.shogyo.com



APPROVED

CHECKED

DRAWING

F23H-2X



**SHOGYO INTERNATIONAL CORP.**  
6851 JERICHO TURNPIKE, SYOSSET, N.Y. 11791  
TEL: (516) 921-9111 • FAX: (516) 921-3777  
www.shogyo.com