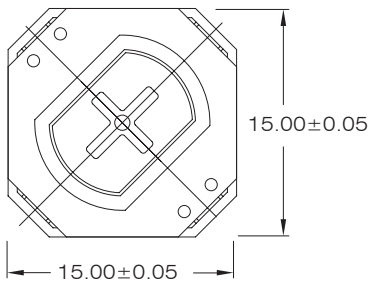
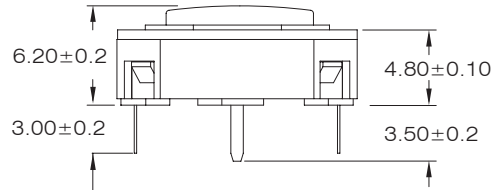
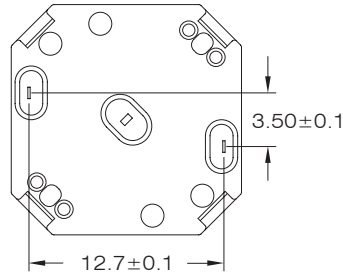


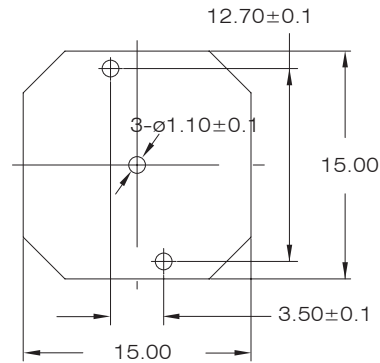


SPECIFICATIONS

CONTACT RATING: 100mA, 42VAC / DC
 MECHANICAL LIFE: 1,000,000 cycles
 CONTACT RESISTANCE: 100mΩ max. (initial)
 INSULATION RESISTANCE: 1,000MΩ min.
 DIELECTRIC STRENGTH: 2,000VAC
 OPERATION FORCE: 3N±0.75N max.



PC MOUNTING



HOW TO ORDER

LT2 - 15 - HT - - - - - -

LT2 Series

Size:
 19 : 19 x 19mm
 15 : 15 x 15mm

HT material:
 HT=High temperature

Plunger : T1/T2/T3

LED quantity:
 0 : no LED 1 : one LED
 2 : two LED

LED color
 1 : white 3 : red 5 : yellow
 6 : green 7 : blue

RoHS code:
 H : RoHS Compliant

Contact material:
 = Au version tin-plated
 Q = silver plated

Another LED color:
 1 : white
 3 : red
 5 : yellow
 6 : green
 7 : blue