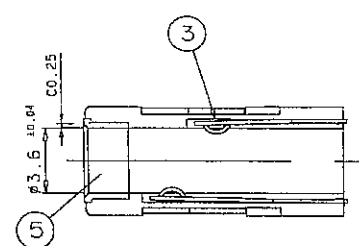
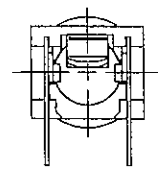


PC BOARD HOLE LAYOUT TOLS: ±0.1  
VIEW FROM DIRECTION OF INSERTION TO PCB

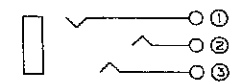


SECTION A-A



SPECIFICATION

1. DIELECTRIC STRENGTH: 500V AC FOR ONE MINUTE.
2. CONTACT RESISTANCE: 50mΩ MAX
3. INSULATION RESISTANCE: 100MΩ MIN. AT 500V DC.



CIRCUIT DIAGRAM

LET	PART NAME	QTY	MATERIAL	REMARK
5	RIM	1	BRASS	NI-PLATED
4	BODY	1	PBT GF30% RESIN UL94V-0	
3	RING SPRING	1	PBS 0.2t	AG-PLATED
2	TIP SPRING	1	PBS 0.3t	AG-PLATED
1	SLEEVE TERMINAL	1	PBS 0.2t	AG-PLATED

TOLERANCES			
X ≤ 5	= ± 0.10		
X > 5	= ± 0.20		
ANGULAR = ±			
DO NOT SCALE DWG.			
DATE		SCALE	
17-05-2007		AS SHOWN IN TABLE	
		3/1 mm	
		DRN / APPD.	
		Y.H. TSANG/K.F. IM	

**SHOGYO INTERNATIONAL CORP.**

# MJ-8435

3.5 mm Audio Jack