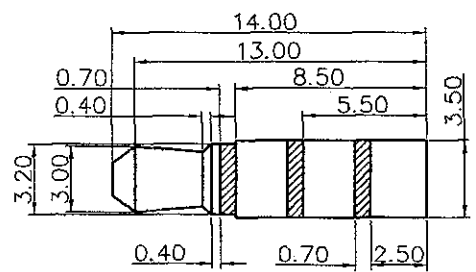
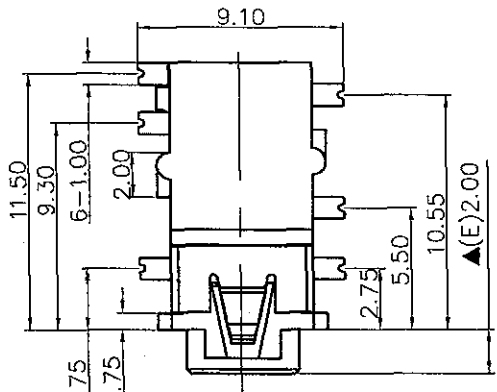
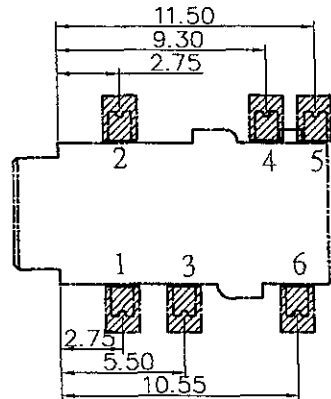
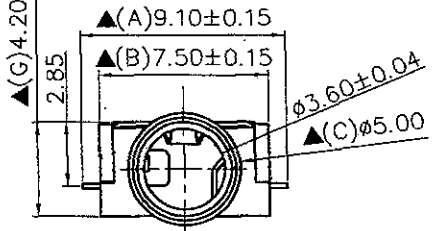
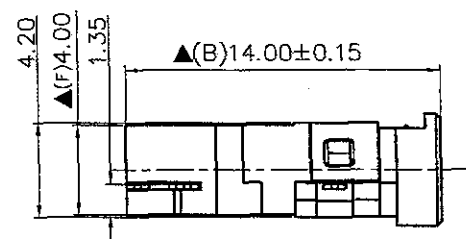
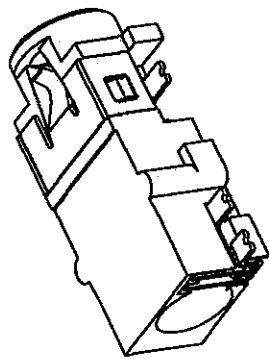


| | | | | | | | | |
|-----------|---|---|---|---|---|---|---|---|
| SCHEMATIC | | | | | | | | |
| MODEL NO | J | L | U | V | W | X | Y | Z |

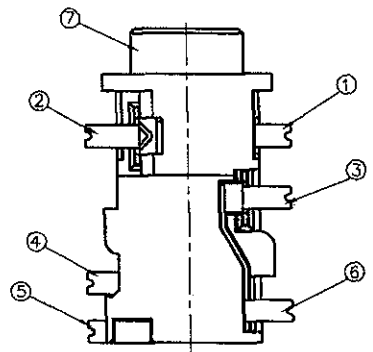


RECOMMENDED PCB LAYOUT
TOP VIEW (TOLERANCE:±0.05)



Pin Hole Layout
(Jack Bottom View)

| | | | | |
|-----|-------------|-----------------------|------|---------------|
| 7. | Housing | LCP | 1 | Black Color |
| 6. | TERMINAL 6 | 0.2T Phosphor Bronze | 1 | Sliver Plated |
| 5. | TERMINAL 5 | 0.2T BRASS | 1 | Sliver Plated |
| 4. | TERMINAL 4 | 0.2T Phosphor Bronze | 1 | Sliver Plated |
| 3. | TERMINAL 3 | 0.2T Phosphor Bronze | 1 | Sliver Plated |
| 2. | TERMINAL 2 | 0.25T Phosphor Bronze | 1 | Sliver Plated |
| 1. | TERMINAL 1 | 0.2T Phosphor Bronze | 1 | Sliver Plated |
| NO. | Description | Material | Q'TY | Finish |



| | | |
|------------|-----|------|
| DATE | DWN | CHKD |
| 11.19.2012 | 陳麗敏 | |

SPECIFICATIONS:
 Contact Resistance : 30mΩ max
 Insulation Resistance : 100MΩ min. at DC 500V
 Dielectric Withstand Voltage : AC 500V for one minute
 Remark: ▲: The Most Important Dimension

RoHS
Pb Free Process

| |
|--|
| PART NAME :3.5 PHONE JACK |
| TOLERANCE :±0.3mm UNLESS OTHERWISE SPECIFIED |
| UNIT:mm |

SHOGYO INTERNATIONAL CORP.
SCJ3007P00(*)S0B00G