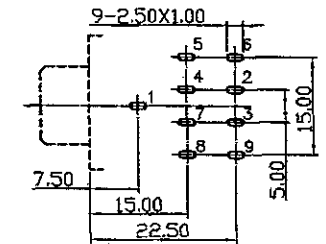
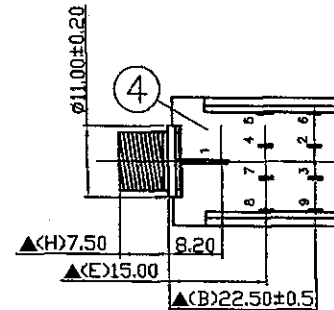
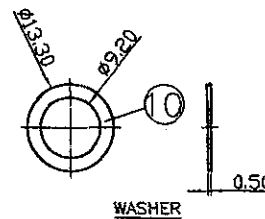
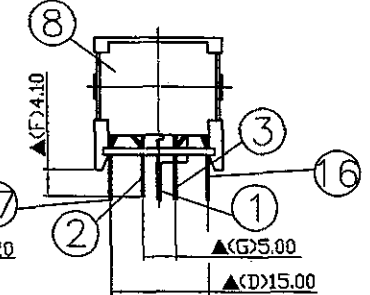
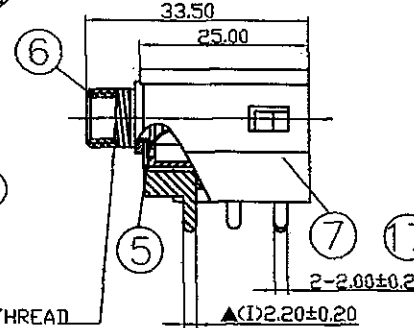
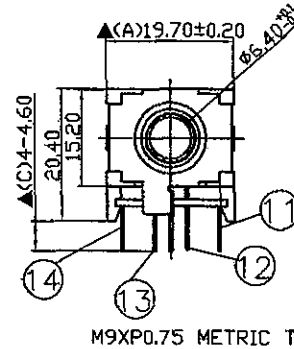


17.	Make Terminal	0.2T Phosphor Bronze	1	Silver Plated
16.	Make Terminal	0.2T Phosphor Bronze	1	Silver Plated
15.	Insulator	POM	2	Black Color
14.	Transfer Terminal	0.35T Phosphor Bronze	1	Silver Plated
13.	Break Terminal	0.4T Brass	1	Silver Plated
12.	Break Terminal	0.4T Brass	1	Silver Plated
11.	Transfer Terminal	0.35T Phosphor Bronze	1	Silver Plated
10.	Washer	0.5T Steel	1	Nickel Plated
9.	Nut	2.0T Steel	1	Nickel Plated
8.	Cover	POM	1	Black Color
7.	Housing	POM	1	Black Color
6.	Barre	Brass	1	Nickel Plated
5.	Earth Spring	0.2T Phosphor Bronze	1	Nickel Plated
4.	Guide Plate	1.0T Bakelite	1	Natural
3.	Ring Terminal	0.25T Phosphor Bronze	1	Silver Plated
2.	Tip Terminal	0.30T Phosphor Bronze	1	Silver Plated
1.	Sleeve Terminal	0.5T Steel	1	Nickel Plated
NO.	Description	Material	Q'TY	Finish



RoHS
Compliant

Pin Hole Layout
(Jack Bottom View)

SPECIFICATIONS:
 Contact Resistance : 30mΩ max
 Insulation Resistance : 100MΩ min. at DC 500V
 Dielectric Withstand Voltage : AC 500V for one minute
 Remark: ▲: The Most Important Dimension

DATE	DWN	CHKD
10.12.2011		

PART NAME :6.3φ PHONE JACK

TOLERANCE :±0.3mm UNLESS OTHERWISE SPECIFIED

UNIT:mm



SHOGYO INTERNATIONAL CORP.

SCJ628M2N(*)S3B00G