



**PART NUMBERING KEY:**

**SHO-18W-XXX-YYY-Q-Z**

**SHO:** SHOGYO

**18W:** 18 Watt Series

**XXX:** Indicates Output Voltage. Available from 5.0VDC – 48.0VDC (050 – 480)

**YYY:** Indicates Output Current. Available from 0.01A – 3.00A (001 – 300)

\*Voltage multiplied by Current must equal a number no greater than the Wattage (18).

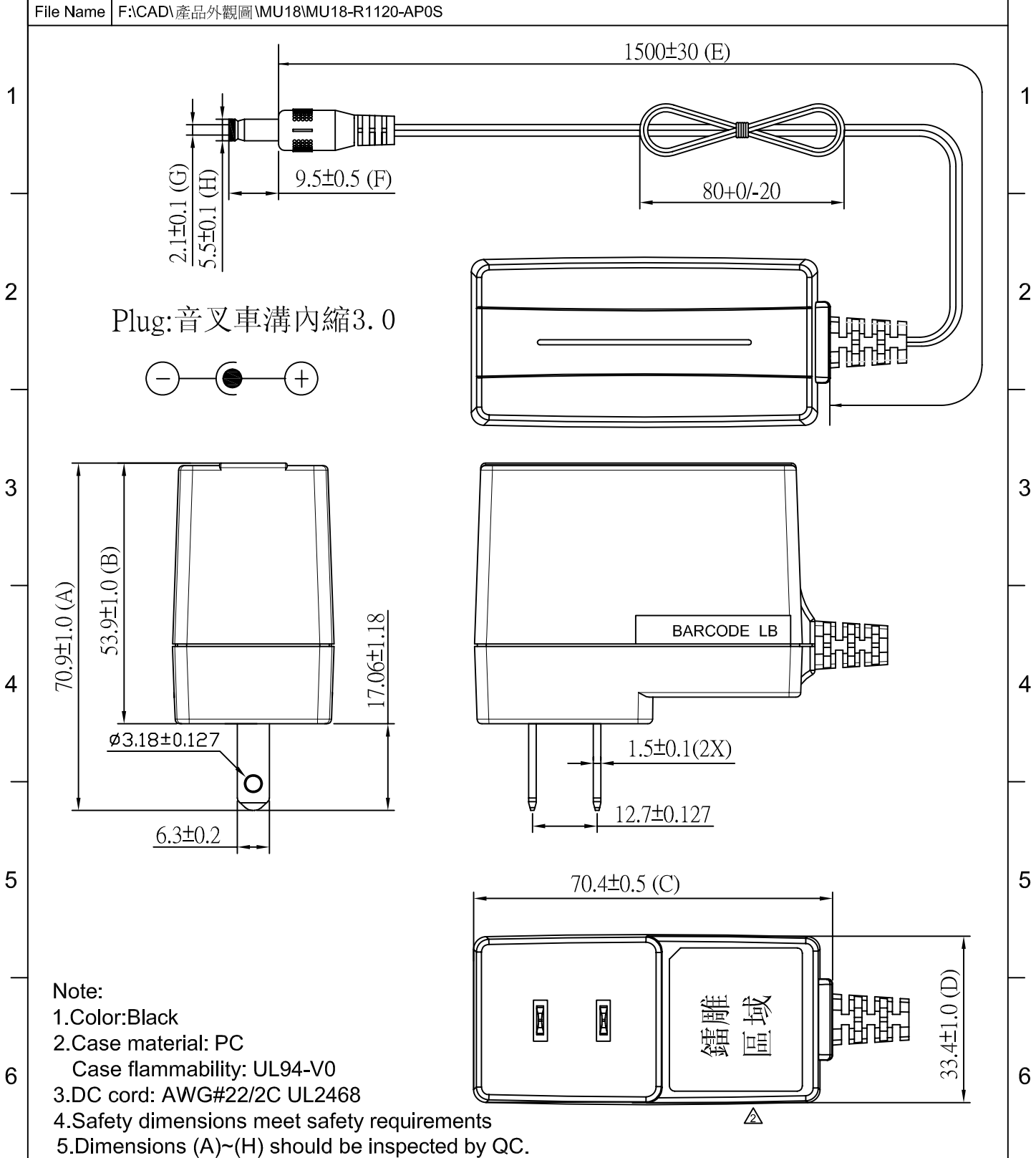
**Q:** Indicates Type of Input Prongs (1=United States, 2=European, 3=United Kingdom, 4=Australian)

**Z:** Indicates Type of Output Plug (2.5 x 5.5mm DC Plug, Strip & Tin, etc.)

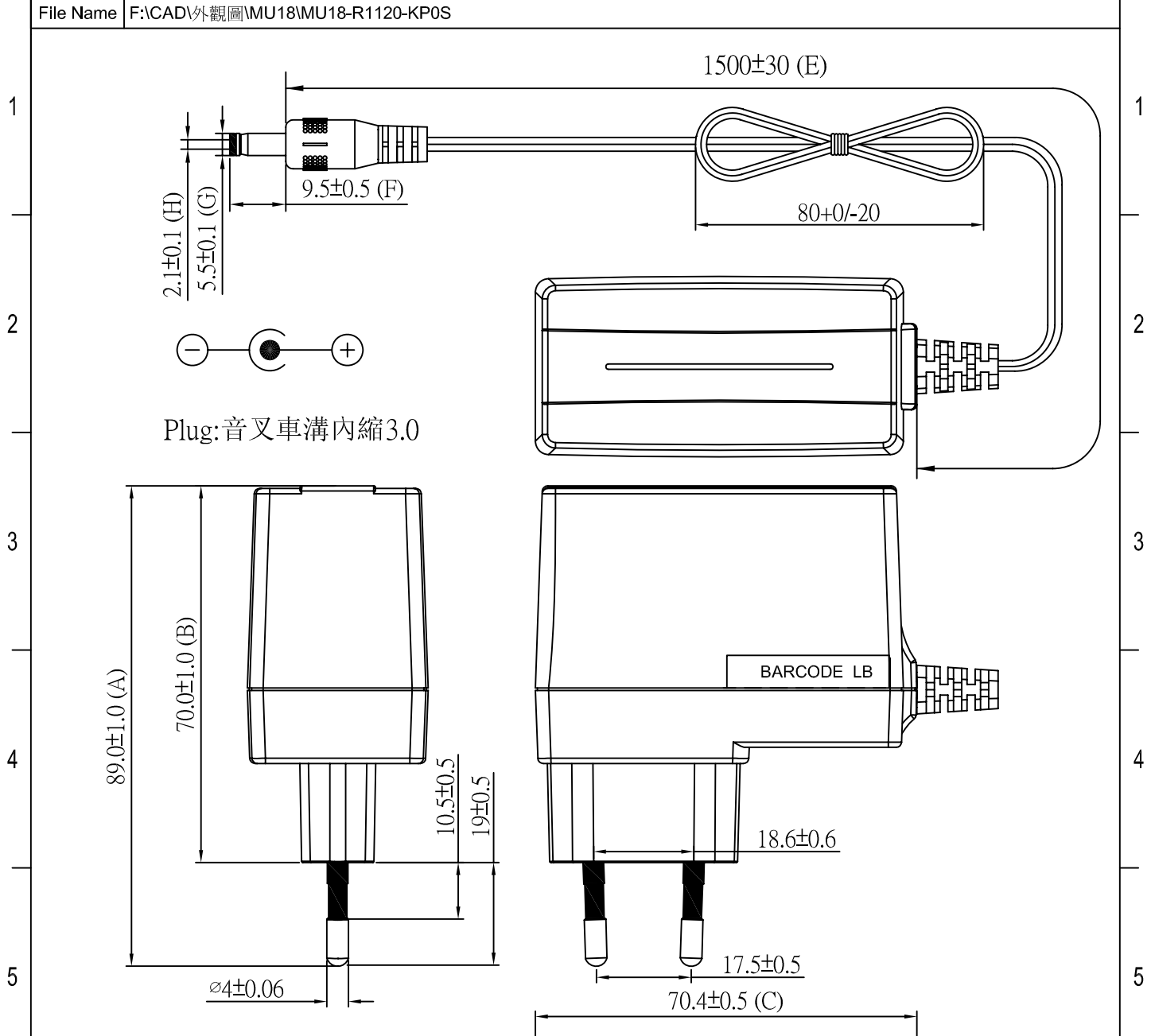
**EXAMPLE:** 15V, 1A Power Supply with U.S. Input Prongs and a 2.1 x 5.5mm DC Plug = **SHO-18W-150-100-1-2.1 x 5.5mm DC Plug**

- **SPECIAL OPTIONS AND CUSTOM DESIGNS AVAILABLE (PLEASE CONTACT SHOGYO DIRECTLY AT [INFO@SHOGYO.COM](mailto:INFO@SHOGYO.COM))**
- **CONTACT SHOGYO DIRECTLY FOR COMPLETE SPECIFICATIONS**





					UNIT	mm	
		銘板改鐫雕	2014.12.8		SCALE		ISSUED DATE 8/DEC/14
		新出藍圖			DRAWN BY BECK ZOU		CHECKED BY DOOM.XIE
7	REV.	ZONE	DESCRIPTION	DATE	ECA NO.	DESIGNED BY FEIFEI ZHAO	APPROVED BY ZQ.WANG
		ITEM NO. :			DRAWING NO.		SHEET
		OUTLINE DRAWING			MU18-R1120-AP0S		1 OF 1



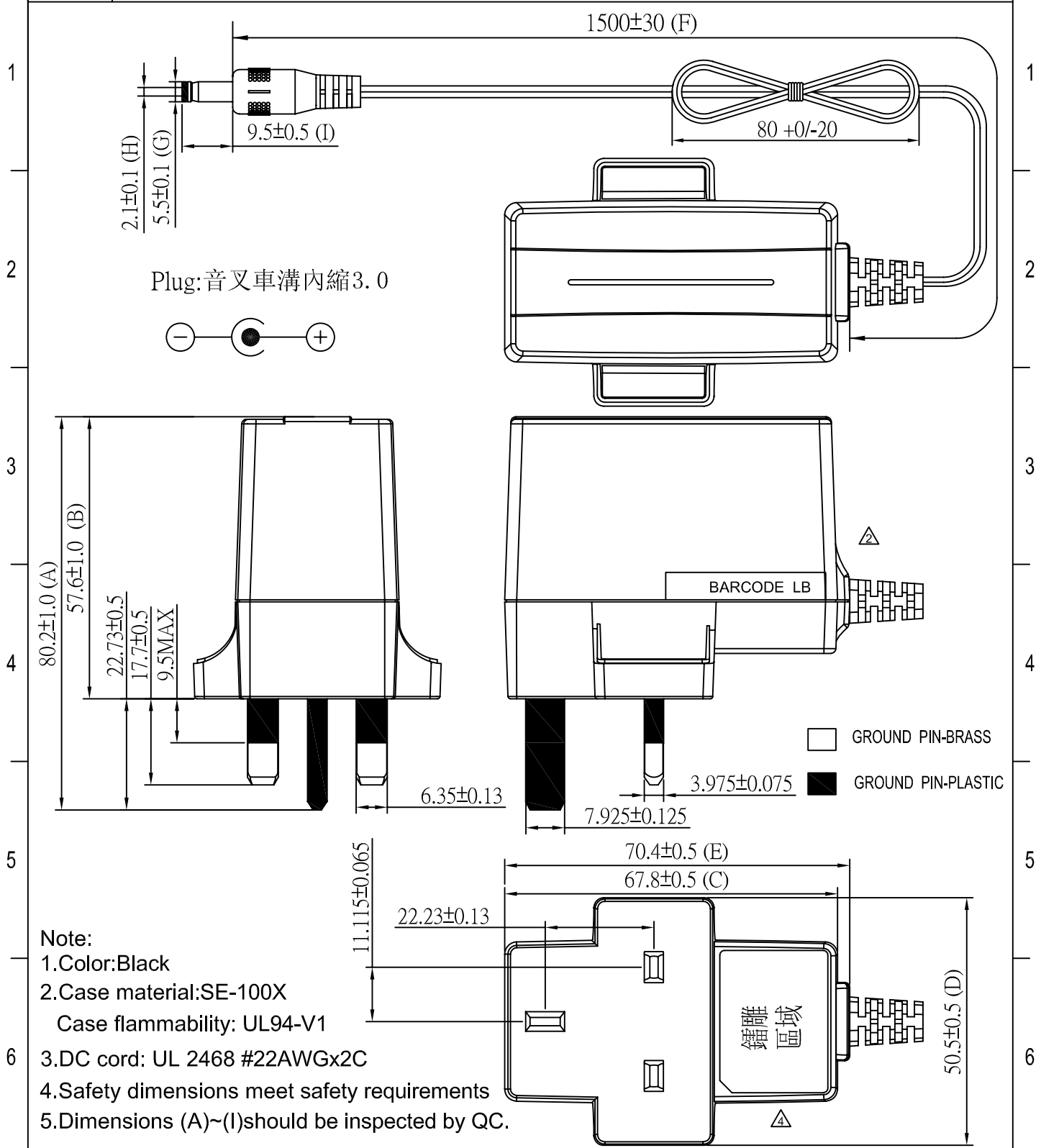
Plug: 音叉車溝內縮3.0

- Note:**
- 1.Color:Black
  - 2.Case material: SE-100X  
Case flammability: UL94-V1
  - 3.DC cord: UL 2468 #22AWGx2C
  - 4.Safety dimensions meet safety requirements
  - 5.Dimensions (A)~(H)should be inspected by QC.

△		銘板改為鑄雕	2014.12.8		UNIT	mm	
△		修改LB黏貼位置	2014.07.29		SCALE		ISSUED DATE 8/DEC/14
△		修改LB为LEI	2013.08.09	ECA-241932	DRAWN BY	BECK ZOU	CHECKED BY DOOM.XIE
7	REV	ZONE	DESCRIPTION	DATE	ECA NO.	DESIGNED BY	APPROVED BY ZQ.WANG



ITEM NO. : OUTLINE DRAWING DRAWING NO. MU18-R1120-KP0S SHEET 1 OF 1



△		銘板改為鐫雕	2014.12.8		UNIT	mm	⊕
△		修改LB为LEI	2013.08.09	ECA-241932	SCALE		ISSUED DATE 8/DEC/14
△		新出圖面			DRAWN BY	BECK ZOU	CHECKED BY DOOM.XIE
7	REV.	ZONE	DESCRIPTION	DATE	ECA NO.	DESIGNED BY	APPROVED BY ZQ.WANG