



PART NUMBERING KEY:

SHO-3.5W-XXX-YYY-Q-Z

SHO: SHOGYO

3.5W: 3.5 Watt Series

XXX: Indicates Output Voltage. Available from 3.0VDC – 24.0VDC (030 – 240)

YYY: Indicates Output Current. Available from 0.01A – 1.00A (001 – 100)

*Voltage multiplied by Current must equal a number no greater than the Wattage (3.5).

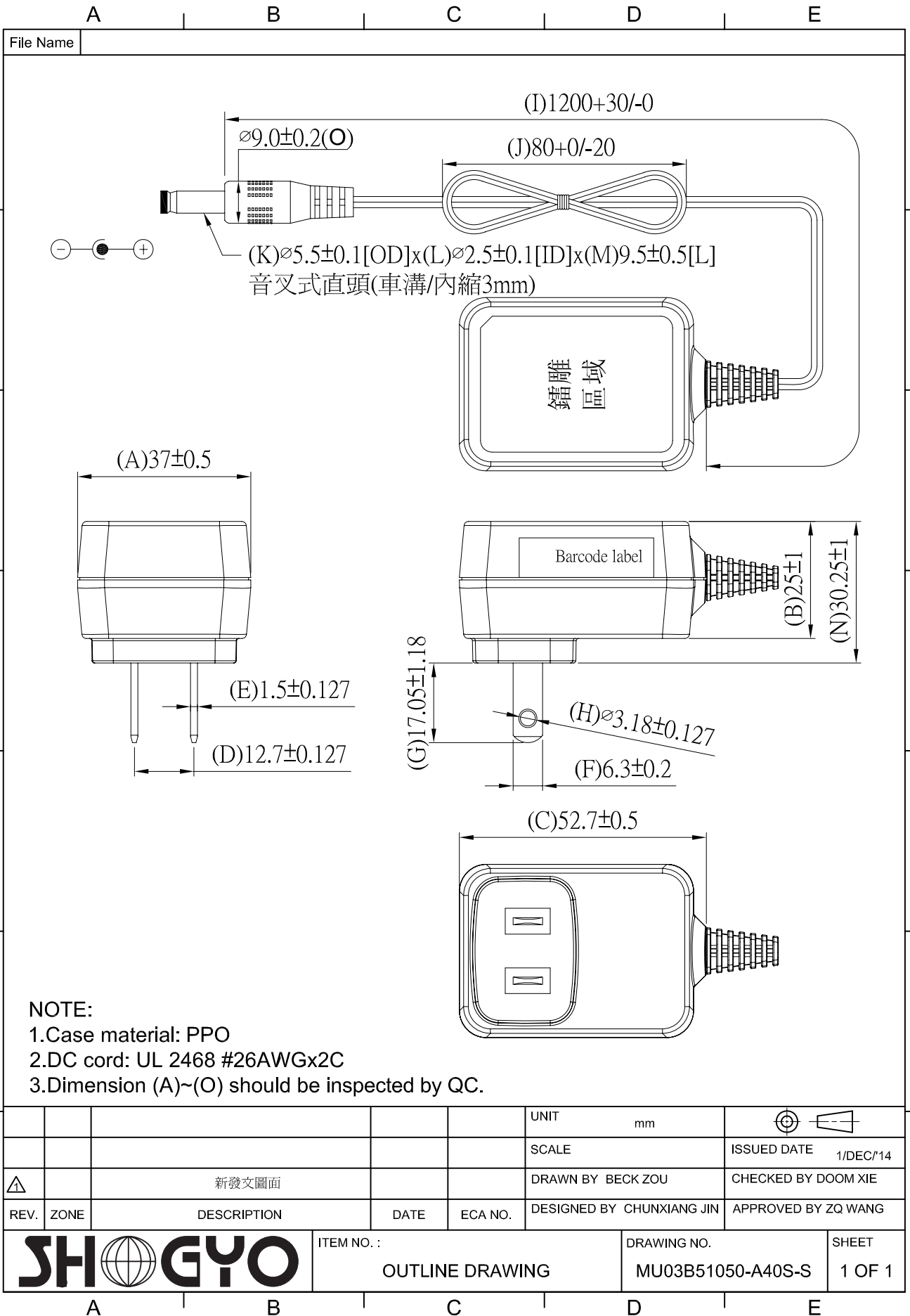
Q: Indicates Type of Input Prongs (1=United States, 2=European, 3=United Kingdom)

Z: Indicates Type of Output Plug (2.5 x 5.5mm DC Plug, Strip & Tin, etc.)

EXAMPLE: 6V, 500mA Power Supply with U.S. Input Prongs and a 2.1 x 5.5mm DC Plug = **SHO-3.5W-060-050-1-2.1 x 5.5mm DC Plug**

- **SPECIAL OPTIONS AND CUSTOM DESIGNS AVAILABLE (PLEASE CONTACT SHOGYO DIRECTLY AT INFO@SHOGYO.COM)**
- **CONTACT SHOGYO DIRECTLY FOR COMPLETE SPECIFICATIONS**

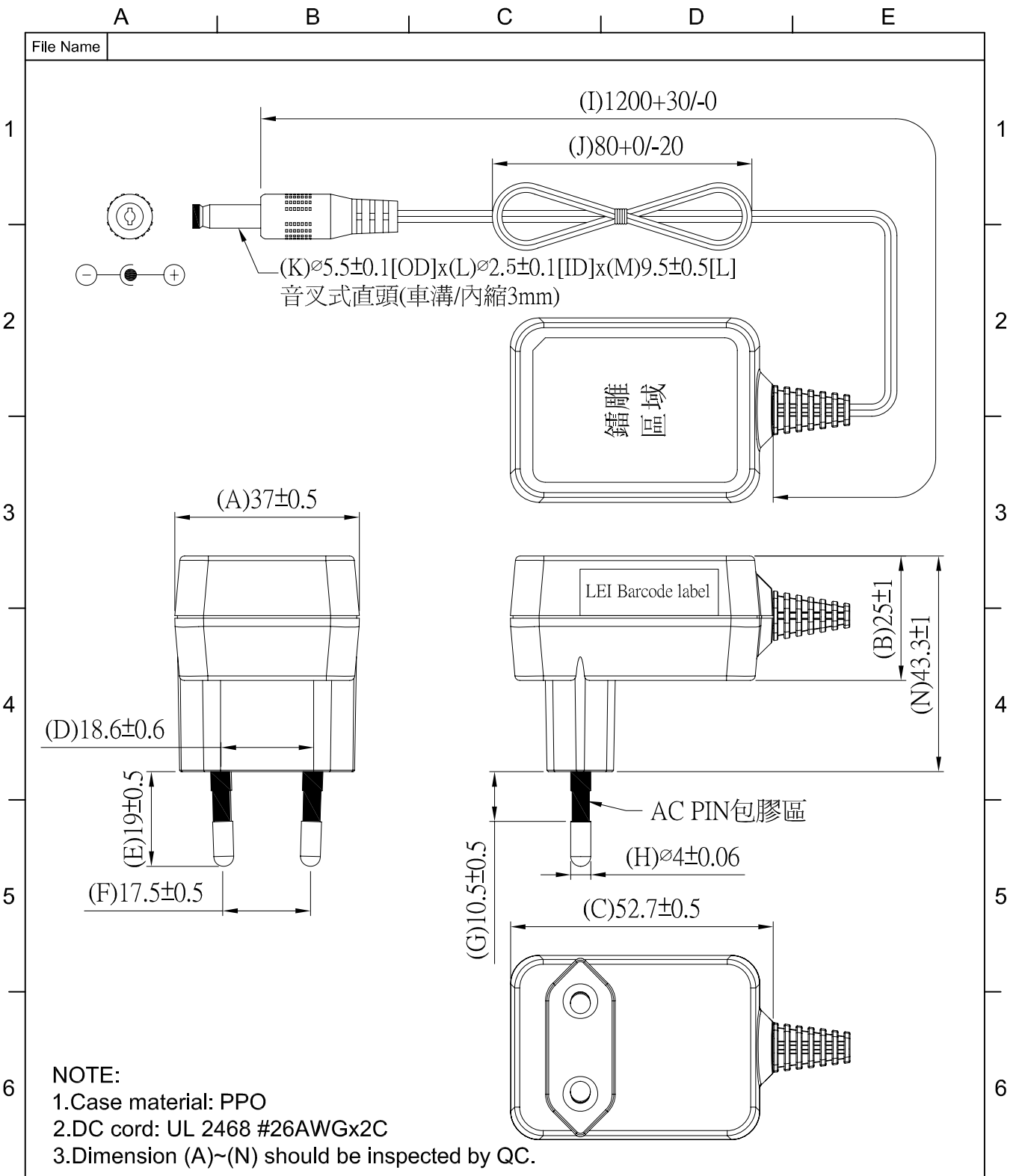




NOTE:
 1. Case material: PPO
 2. DC cord: UL 2468 #26AWGx2C
 3. Dimension (A)~(O) should be inspected by QC.

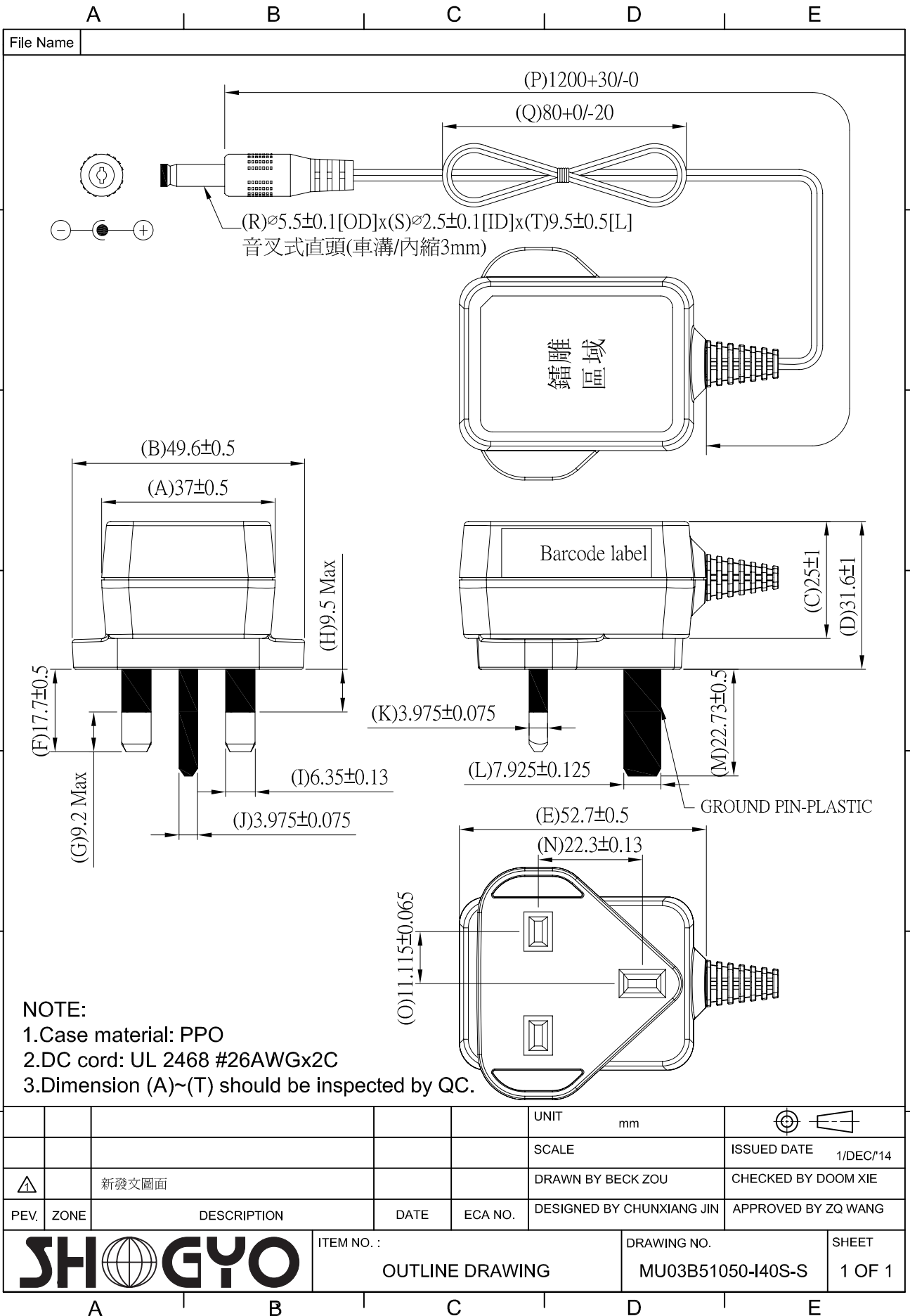
					UNIT	mm	
					SCALE		ISSUED DATE 1/DEC/14
		新發文圖面			DRAWN BY	BECK ZOU	CHECKED BY DOOM XIE
REV.	ZONE	DESCRIPTION	DATE	ECA NO.	DESIGNED BY	CHUNXIANG JIN	APPROVED BY ZQ WANG

		ITEM NO. :	DRAWING NO.		SHEET
		OUTLINE DRAWING	MU03B51050-A40S-S		1 OF 1



					UNIT	mm	
					SCALE		ISSUED DATE 1/DEC/14
新發文圖面					DRAWN BY BECK ZOU		CHECKED BY DOOM XIE
REV.	ZONE	DESCRIPTION	DATE	ECA NO.	DESIGNED BY CHUNXIANG JIN		APPROVED BY ZQ.WANG
SHIGYO			ITEM NO. :		DRAWING NO.		SHEET
			OUTLINE DRAWING		MU03B51050-K40S-S		1 OF 1

A B C D E



A

B

C

D

E