



**PART NUMBERING KEY:**

**SHO-30W-XXX-YYY-Q-Z**

**SHO:** SHOGYO

**30W:** 30 Watt Series

**XXX:** Indicates Output Voltage. Available from 5.0VDC – 48.0VDC (050 – 480)

**YYY:** Indicates Output Current. Available from 0.01A – 5.00A (001 – 500)

\*Voltage multiplied by Current must equal a number no greater than the Wattage (30).

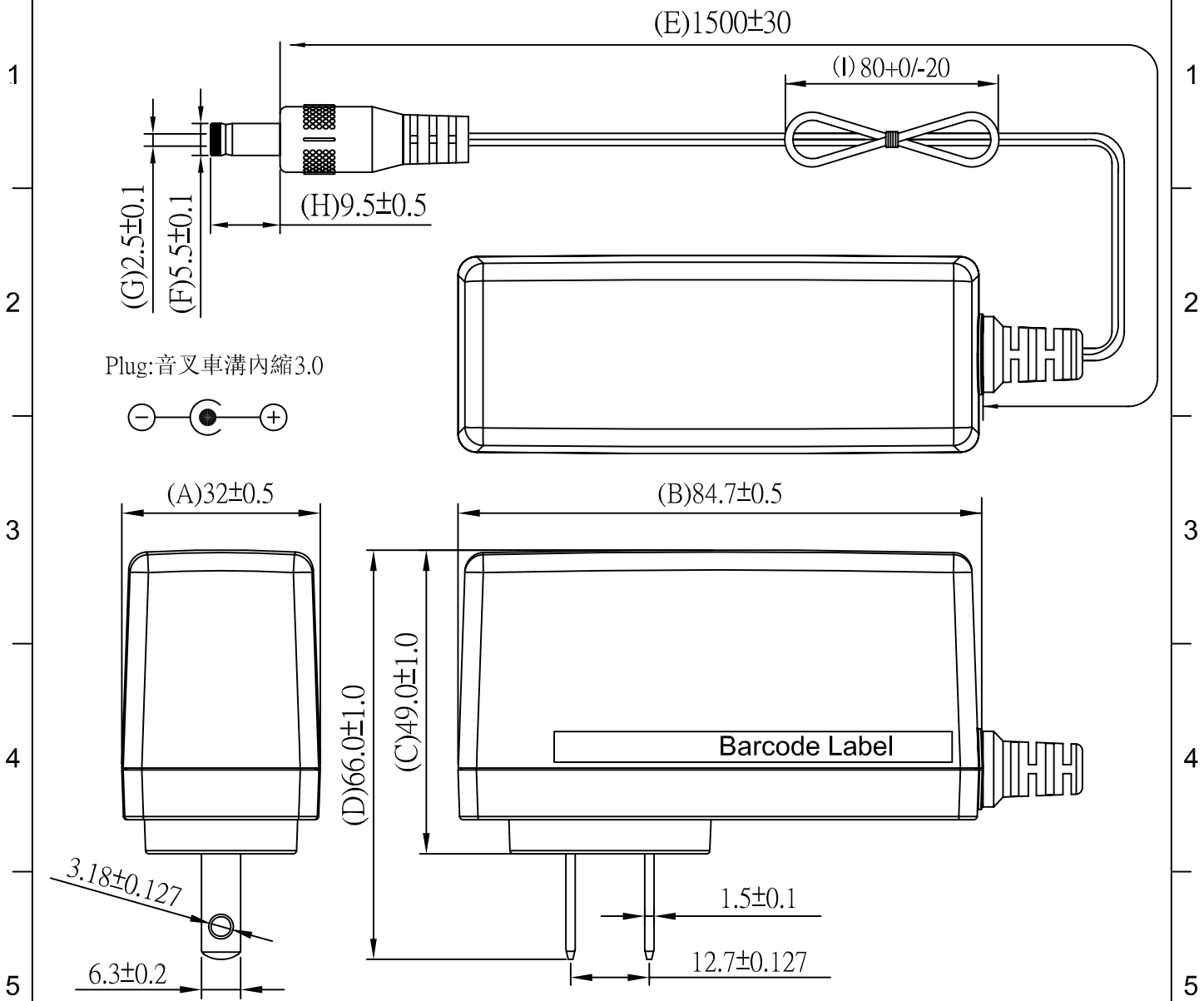
**Q:** Indicates Type of Input Prongs (1=United States, 2=European, 3=United Kingdom, 4=Australian)

**Z:** Indicates Type of Output Plug (2.5 x 5.5mm DC Plug, Strip & Tin, etc.)

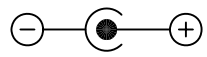
**EXAMPLE:** 5V, 4A Power Supply with U.S. Input Prongs and a 2.1 x 5.5mm DC Plug = **SHO-30W-050-400-1-2.1 x 5.5mm DC Plug**

- **SPECIAL OPTIONS AND CUSTOM DESIGNS AVAILABLE (PLEASE CONTACT SHOGYO DIRECTLY AT [INFO@SHOGYO.COM](mailto:INFO@SHOGYO.COM))**
- **CONTACT SHOGYO DIRECTLY FOR COMPLETE SPECIFICATIONS**

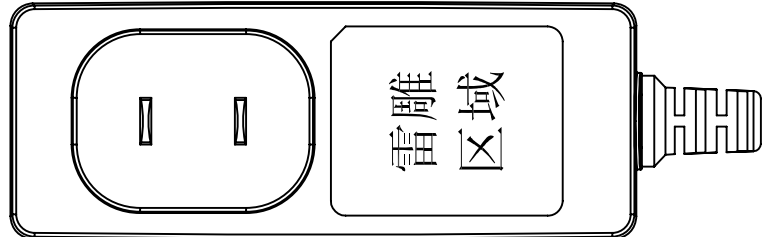




Plug: 音叉車溝內縮3.0



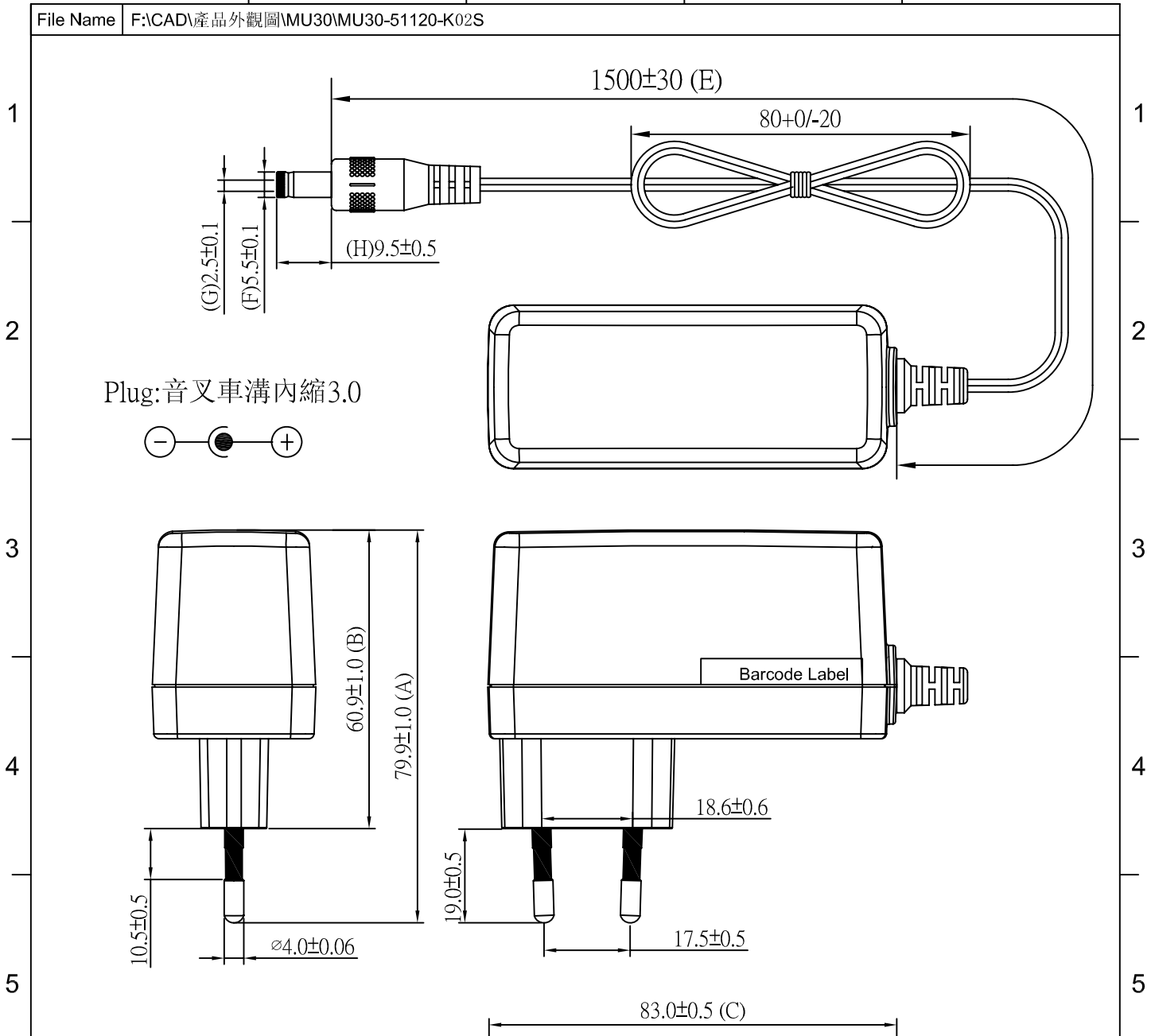
- Note:**
- 1.Color:Black
  - 2.Case material: PC  
Case flammability: UL94-V0
  - 3.DC cord: AWG#18/2C UL2468  
(26-007-1202)
  - 4.Safety dimensions meet safety requirements
  - 5.Dimension (A)~(I)should be inspected by QC



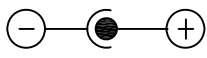
					UNIT	mm	
					SCALE		ISSUED DATE 8/DEC/14
		新出藍圖			DRAWN BY BECK ZOU		CHECKED BY DOOM.XIE
7	REV.	ZONE	DESCRIPTION	DATE	ECA NO.	DESIGNED BY	APPROVED BY ZQ.WANG



ITEM NO. : \_\_\_\_\_ DRAWING NO. MU30-51120-A02S SHEET 1 OF 1



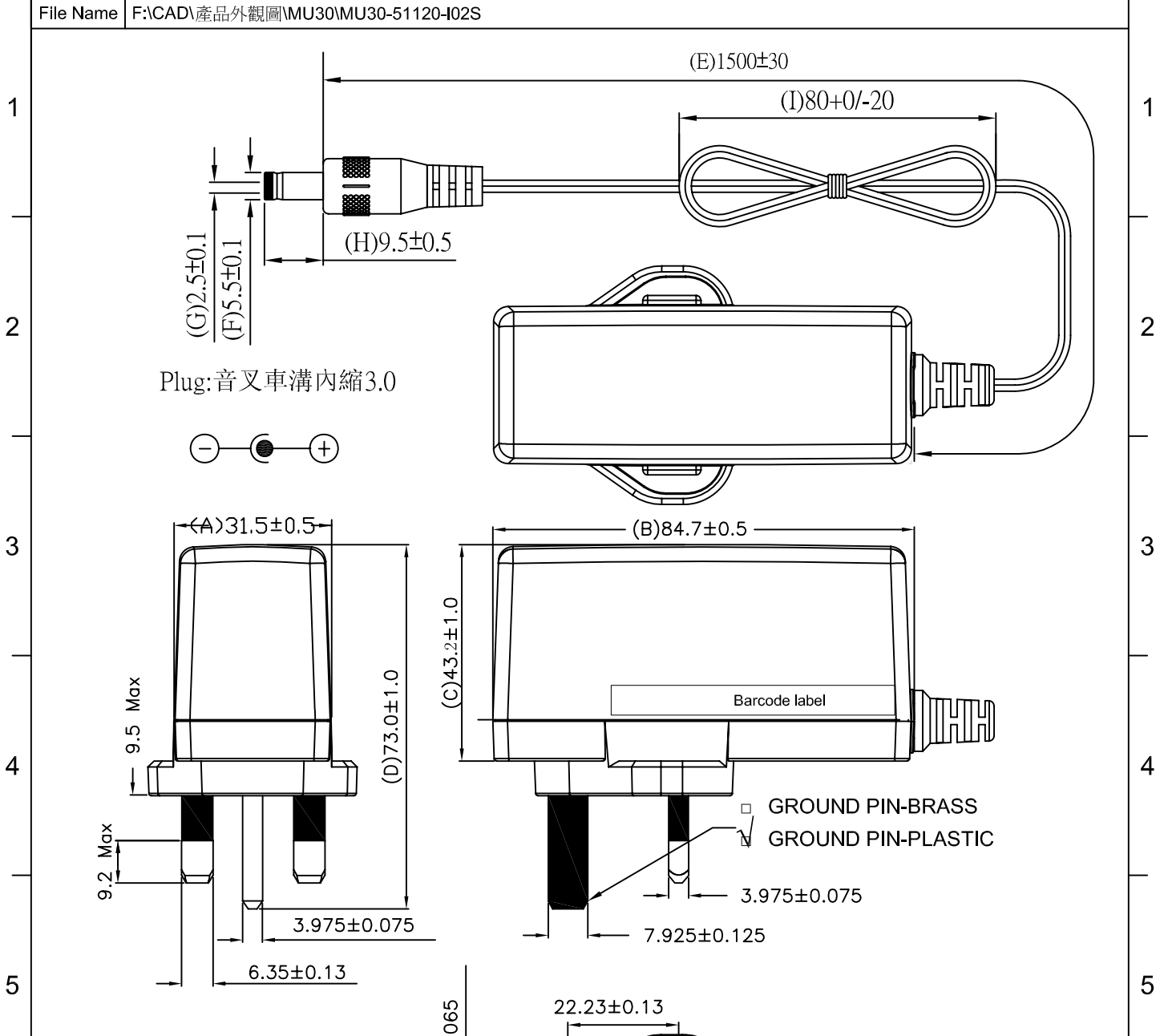
Plug: 音叉車溝內縮3.0



- Note:**
- 1.Color:Black
  - 2.Case material: PC  
Case flammability: UL94-V0
  - 3.DC cord: AWG#20/2C UL2468
  - 4.Safety dimensions meet safety requirements
  - 5.Dimension (A)~(H)should be inspected by QC

					UNIT	mm	
					SCALE		ISSUED DATE 13/DEC/14
		新發文圖紙			DRAWN BY BECK ZOU		CHECKED BY DOOM.XIE
7	REV	ZONE	DESCRIPTION	DATE	ECA NO.	DESIGNED BY WU LUOCHEN	APPROVED BY ZQ.WANG

**SHIGYO** ITEM NO. : OUTLINE DRAWING DRAWING NO. MU30-51120-K02S SHEET 1 OF 1



Plug: 音叉車溝內縮3.0



Barcode label

GROUND PIN-BRASS  
GROUND PIN-PLASTIC

- Note:
- 1.Color:Black
  - 2.Case material: PC  
Case flammability: UL94-V0
  - 3.DC cord: AWG#18/2C UL2468  
(26-007-1202)
  - 4.Safety dimensions meet safety requirements
  - 5.Dimension (A)~(I)should be inspected by QC

					UNIT	mm	
					SCALE		ISSUED DATE 13/DEC/14
		新出藍圖			DRAWN BY BECK ZOU		CHECKED BY DOOM.XIE
REV.	ZONE	DESCRIPTION	DATE	ECA NO.	DESIGNED BY		APPROVED BY ZQ.WANG

**SHOGYO** ITEM NO. : DRAWING NO. MU30-51120-I02S SHEET 1 OF 1