

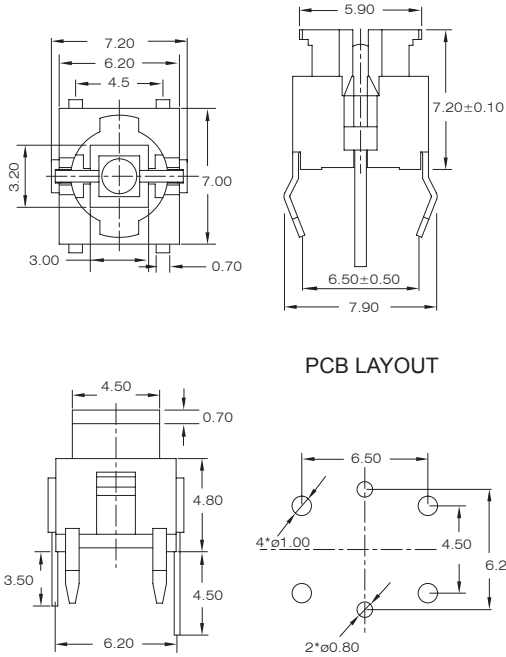
SPL6B,C



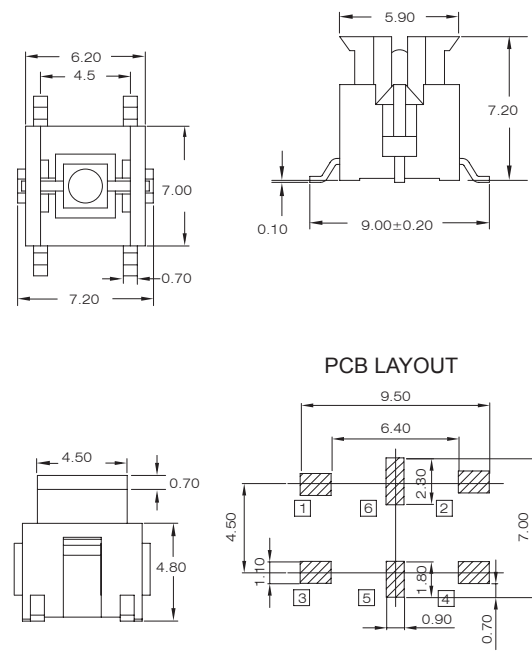
**SPECIFICATIONS**

CIRCUIT: SPST  
 CONTACT RATING: 50mA  
 VOLTAGE RATING: 12VDC  
 DIELECTRIC WITH STANDING VOLTAGE: 250 VAC for 1 minute  
 CONTACT RESISTANCE: 100mΩ max. (initial)  
 INSULATION RESISTANCE: 100MΩ min.  
 OPERATION LIFE: 1,000,000 cycles min.  
 SOLDERING SPECIFICATION: 260°C for 3 seconds

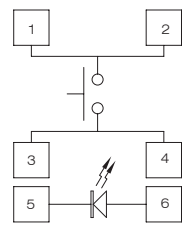
SPL6B



SPL6C



CIRCUIT DIAGRAM



**HOW TO ORDER**

SPL6	□	—	□	—	□□	—	□	—	□	—	□	—	□		
	SWITCH		OPERATION FORCE		LED COLOR / KINDS		CAP MODEL		CAP COLOR		PACKAGE STYLE		RoHS code		
	B = Regular Type C = SMT Type		1= 100gf 2= 160gf 3= 260gf		□= without led 1 = White 3 = Red 4 = Orange 5 = Yellow 6 = Green 7 = Blue		□= Normal L= Highlight N=Add Zener		□= without cap A = □ B = ○ C = □		1 = White 2 = Black 3 = Red 5 = Yellow 6 = Green 7 = Blue		□= bag T/R= Tape & Reel		H= RoHS Compliant