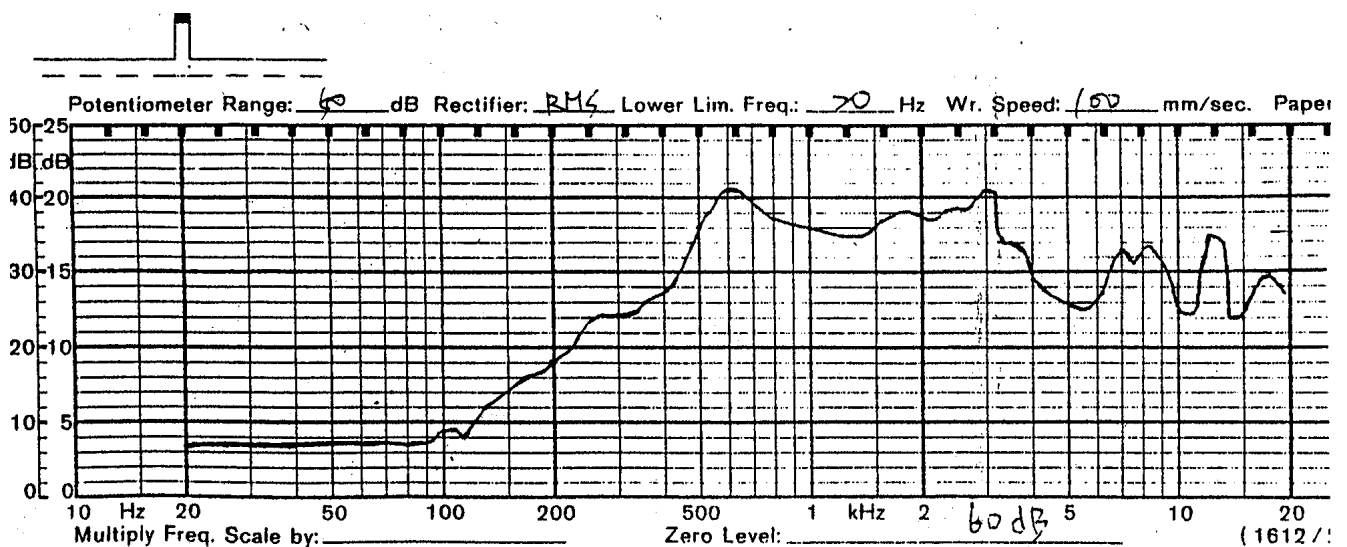


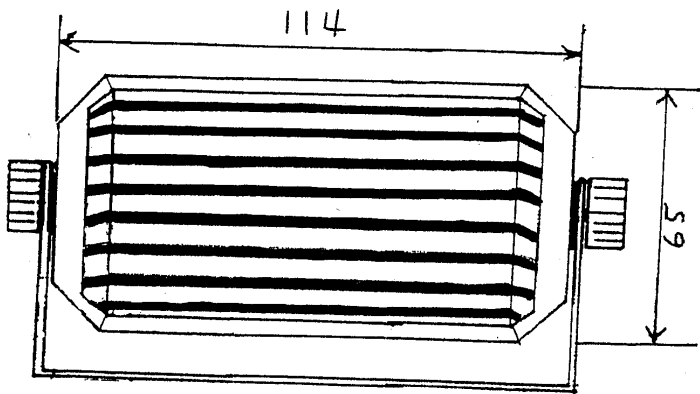
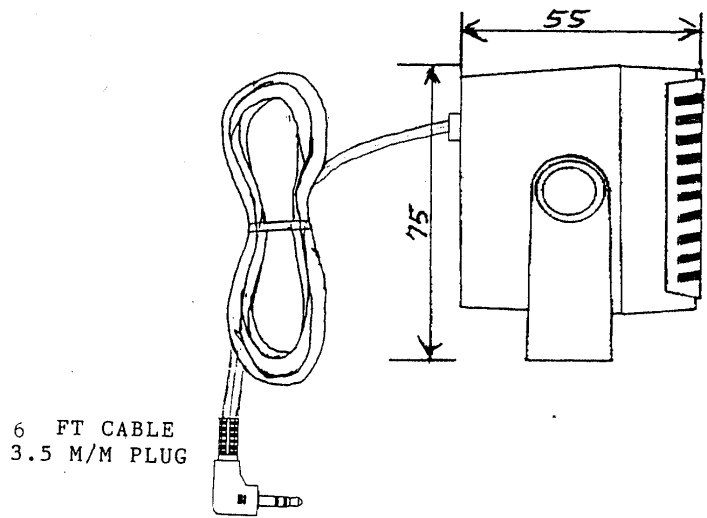
SHOGYO INTERNATIONAL CORP.

www.shogyo.com

SPEAKER SPECIFICATIONS

MODEL NO.	AIC-366X (RoHS)				
1	NOMINAL SIZE	mm	inch		
2	IMPEDANCE	8 Ω ± 15%	at. 1200 Hz	1 V	
3	RESONANCE FO	500 Hz ± 100 Hz	FO Hz	1 V	
4	OUTPUT S.P.L.	95 dB/W ± 2 dB	1 W 50 cm average at		
5	FREQ. RESPONSE	Fo Hz ~ 20K Hz Max 10 dB	800, 1K 1.2K, 1.5K Hz		
6	INPUT POWER	Rated power 5 W	Max power 10 W		
7	OPERATION	Must be normal at program source 5 W			
8	BUZZ, RATTLE, ETC.	Must be normal at Sine Wave 4.9 V			
9	MAGNET	mm			
10	FLUX DENSITY	Gauss ± 10%	total flux max well within		
11	DISTORTION				
12	LOAD TEST	After test meet Item 7 and 8	White noise 5 W 48 Hours		
13	OPERATION TEMP.	Must be normal			
14	HEAT TEST	After test meet Item 7 and 8	70 ± 2° C 20-50 % R.H. 48 Hours		
15	HUMIDITY TEST	After test meet Item 7 and 8	40 ± 2° C 90-95 % R.H. 48 Hours		





MODEL NO.		
AIC-366X		
APPROVED	CHECKED	DRAWING