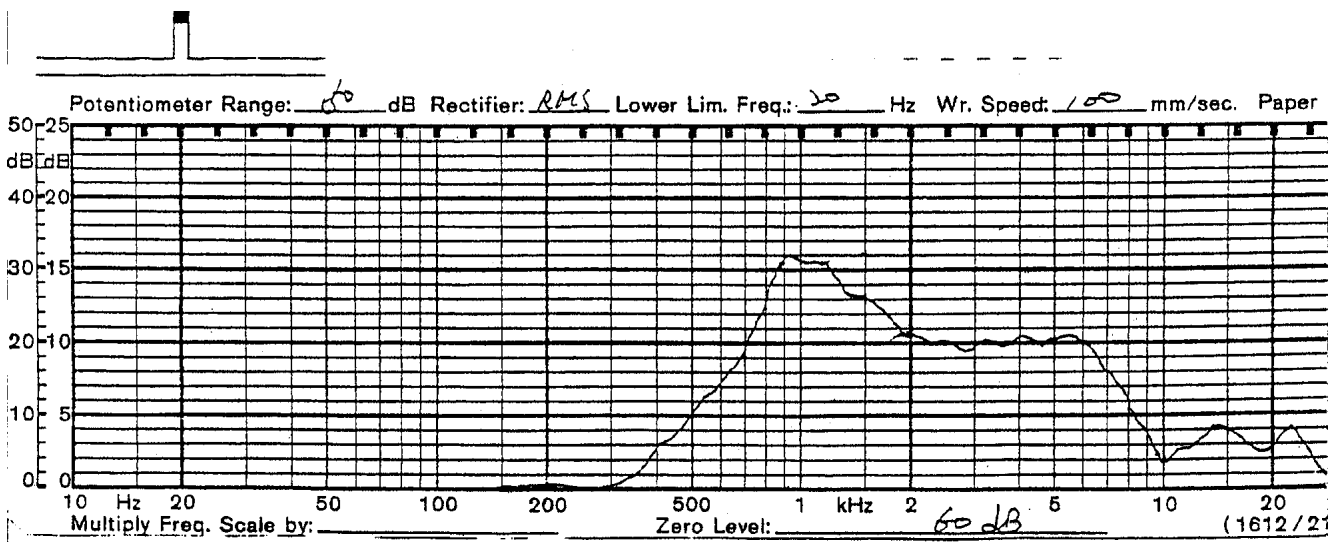


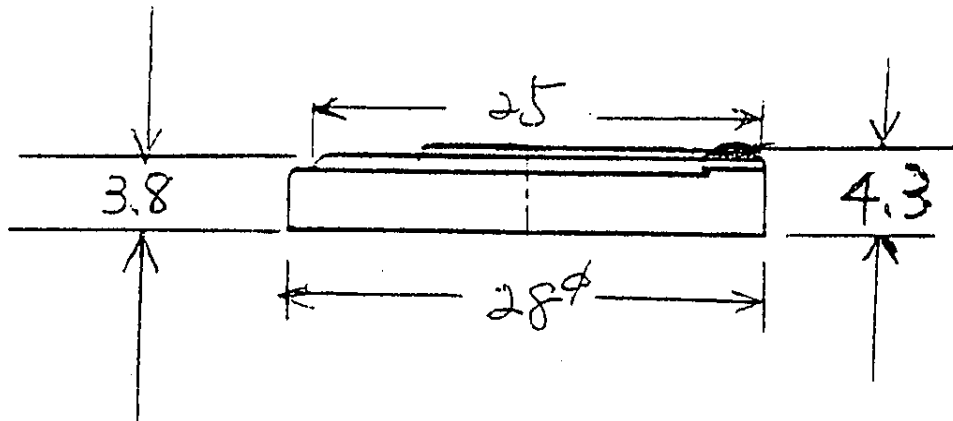
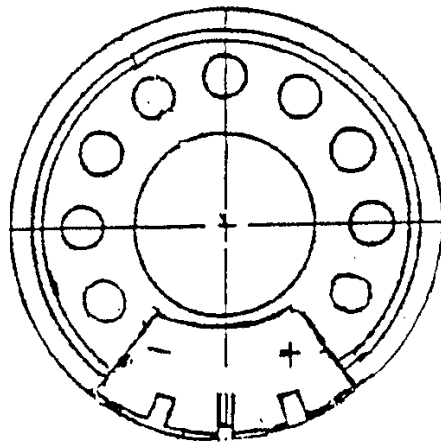
# SHOGYO INTERNATIONAL CORP.

www.shogyo.com

## SPEAKER SPECIFICATIONS

MODEL NO.	<b>GC0281MX (RoHS)</b>				
<b>1</b>	NOMINAL SIZE	<b>28 mm</b>	<b>inch</b>		
<b>2</b>	IMPEDANCE	<b>8 Ω ± 15%</b>	<b>at. 1.5K Hz</b>	<b>1 V</b>	
<b>3</b>	RESONANCE FO	<b>850 Hz ± 150 Hz</b>	<b>FO Hz</b>	<b>1 V</b>	
<b>4</b>	S.P. LEVEL	<b>82 dB/w ± 3 dB</b>	<b>0.2 W 50 cm average</b>		
<b>5</b>	FREQ. RESPONSE	<b>Fo Hz ~ 6K Hz</b>	<b>MAX 10 dB</b>	<b>at 1.2K, 1.5K, 2K, 2.5K Hz</b>	
<b>6</b>	INPUT POWER	Nominal Input <b>0.2 W</b>	Handling Capacity <b>0.3 W</b>		
<b>7</b>	OPERATION	Must be normal at program source <b>0.2 W</b>			
<b>8</b>	BUZZ, RATTLE, ETC.	Must be normal at Sine Wave <b>1.26 V</b>			
<b>9</b>	MAGNET	<b>9.5 x 1.5 mm</b>			
<b>10</b>	FLUX DENSITY	<b>Gauss ± 10%</b>	<b>total flux max well within</b>		
<b>11</b>	TOTAL WEIGHT	gr	oz		
<b>12</b>	LOAD TEST	After test meets Item 7 and 8	White noise <b>0.2 W 5 Hours</b>		
<b>13</b>	DISTORTION				
<b>14</b>	HEAT TEST	After test meets Item 7 and 8	<b>65 ± 2° C 20-50 % R.H. 5 Hours</b>		
<b>15</b>	HUMIDITY TEST	After test meet Item 7 and 8	<b>40 ± 2° C 90-95 % R.H. 5 Hours</b>		





TOLERANCE:  $\pm 0.3$  MM

MODEL NO. GC0281MX

APPROVED	CHECKED	DRAWING