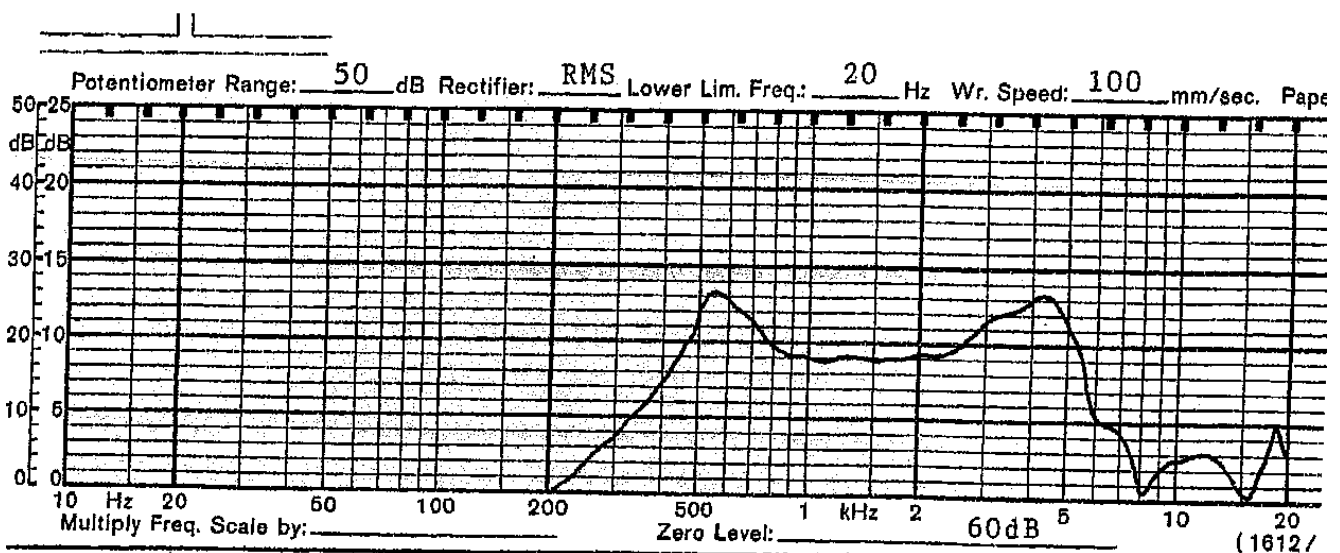


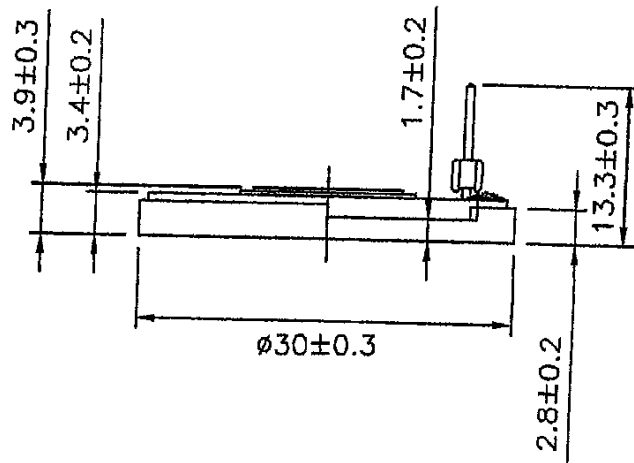
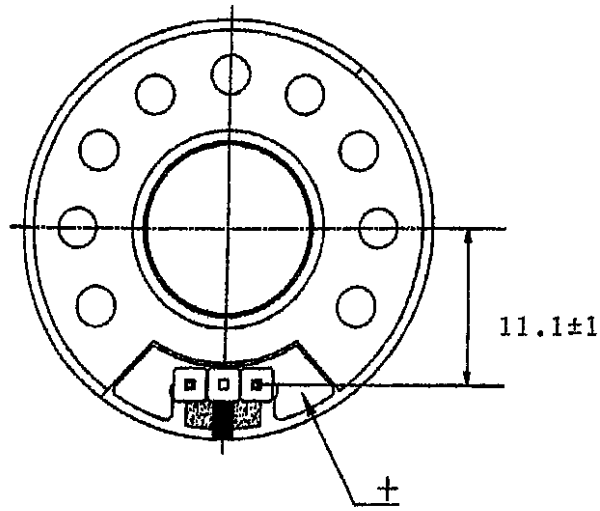
SHOGYO INTERNATIONAL CORP.

www.shogyo.com

SPEAKER SPECIFICATIONS

| | | | | | | |
|-----------|---------------------------|---|--|------------|--|--|
| MODEL NO. | GC0301MP-1X (RoHS) | | | | | |
| 1 | NOMINAL SIZE | 30 mm | inch | | | |
| 2 | IMPEDANCE | 8 Ω ± 15% | at. 1.5K Hz | 1 V | | |
| 3 | RESONANCE FO | 500 Hz ± 100 Hz | FO Hz | 1 V | | |
| 4 | S.P. LEVEL | 78 dB/w ± 3 dB | 0.2 W 50 cm average at 800, 1K, 1.2K, 1.5K Hz | | | |
| 5 | FREQ. RESPONSE | Fo Hz ~ 6K Hz | | | | |
| 6 | INPUT POWER | Nominal Input 0.2 W | Handling Capacity 0.3 W | | | |
| 7 | OPERATION | Must be normal at program source 0.2 W | | | | |
| 8 | BUZZ, RATTLE, ETC. | Must be normal at Sine Wave 1.26 V | | | | |
| 9 | MAGNET | 9.5 x 1.5 mm | | | | |
| 10 | FLUX DENSITY | Gauss ± 10% | total flux max well within | | | |
| 11 | TOTAL WEIGHT | gr | oz | | | |
| 12 | LOAD TEST | After test meets Item 7 and 8 | White noise 0.2 W 24 Hours | | | |
| 13 | DISTORTION | | | | | |
| 14 | HEAT TEST | After test meets Item 7 and 8 | 60 ± 2° C 20-50 % R.H. 24 Hours | | | |
| 15 | HUMIDITY TEST | After test meet Item 7 and 8 | 40 ± 2° C 90-95 % R.H. 24 Hours | | | |





MODEL NO. GC0301MP-1X

| APPROVED | CHECKED | DRAWING |
|----------|---------|---------|
| | | |