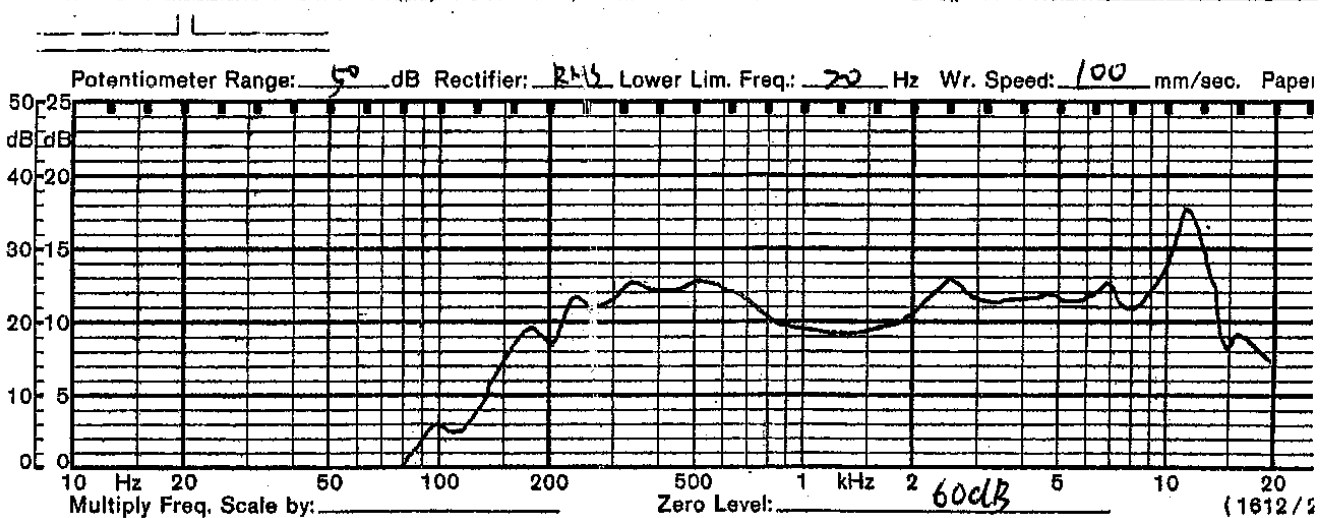


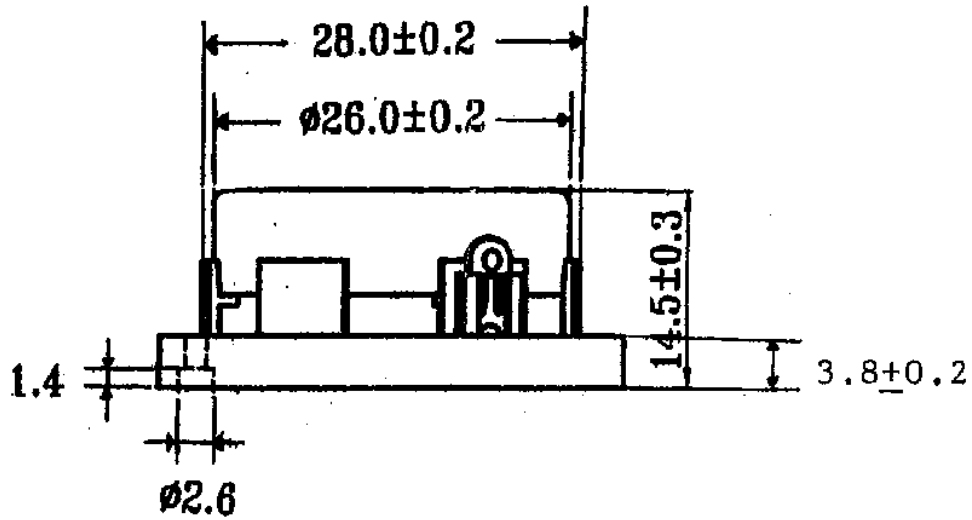
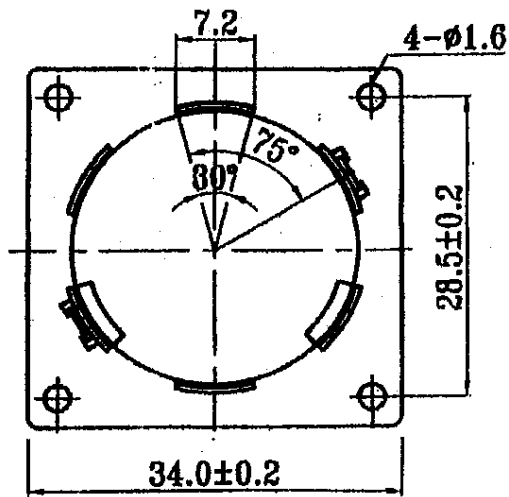
SHOGYO INTERNATIONAL CORP.

www.shogyo.com

SPEAKER SPECIFICATIONS

| | | | | | |
|-----------|-------------------------|---|--|------------------------------|--|
| MODEL NO. | GC0341KLX (RoHS) | | | | |
| 1 | NOMINAL SIZE | 34 x 34 x 14.5H mm | inch | | |
| 2 | IMPEDANCE | 8 Ω ± 15% | at. 1K Hz | 1 V | |
| 3 | RESONANCE FO | 260 Hz ± 52 Hz | FO Hz | 1 V | |
| 4 | S.P. LEVEL | 84 dB/w ± 3 dB | 1 W 50 cm average at | | |
| 5 | FREQ. RESPONSE | Fo Hz ~ 20K Hz | MAX 10 dB | 400, 500, 600, 800 Hz | |
| 6 | INPUT POWER | Nominal Input 2 W | Handling Capacity 4 W | | |
| 7 | OPERATION | Must be normal at program source 2 W | | | |
| 8 | BUZZ, RATTLE, ETC. | Must be normal at Sine Wave 4 V | | | |
| 9 | MAGNET | 18.7 x 4.0 mm | | | |
| 10 | FLUX DENSITY | Gauss ± 10% | total flux max well within | | |
| 11 | TOTAL WEIGHT | | gr | oz | |
| 12 | LOAD TEST | After test meets Item 7 and 8 | White noise 2 W 24 Hours | | |
| 13 | DISTORTION | | | | |
| 14 | HEAT TEST | After test meets Item 7 and 8 | 65 ± 2° C 20-50 % R.H. 24 Hours | | |
| 15 | HUMIDITY TEST | After test meet Item 7 and 8 | 40 ± 2° C 90-95 % R.H. 24 Hours | | |





MODEL NO.

GC0341KLX

APPROVED

CHECKED

DRAWING