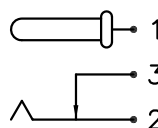
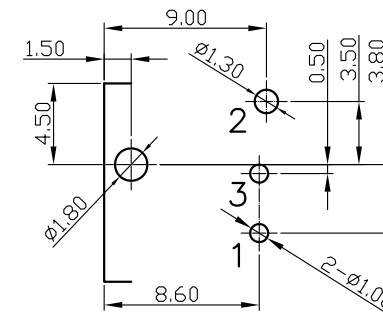
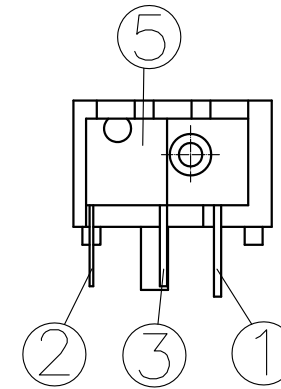
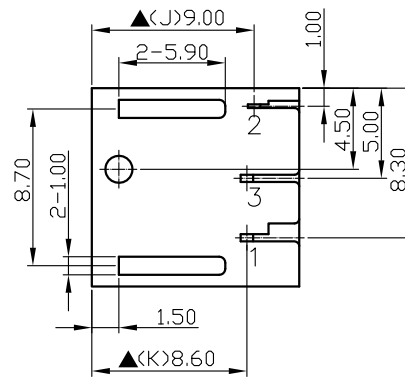
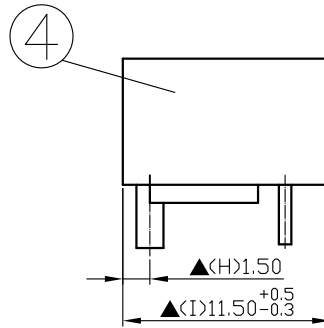
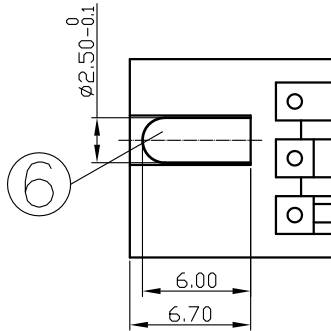
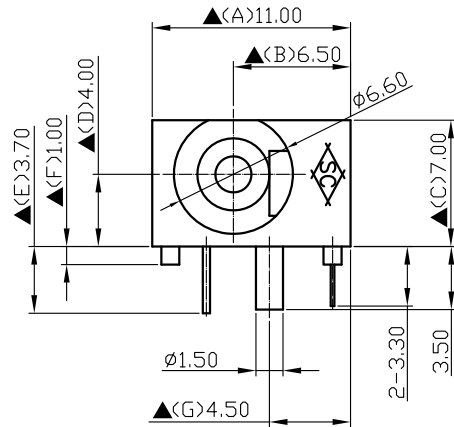


SCHEMATIC	
MODEL NO	C



Pin Hole Layout  
(Jack Bottom View)

6.	Pin(2.5 $\phi$ )	Copper	1	Nickel Plated
5.	Cover	PBT+15%	1	Black Color
4.	Housing	PBT+30%	1	Black Color
3.	Break Terminal	0.4T Brass	1	Silver Plated
2.	Sleeve Spring	0.2T YcuT	1	Silver Plated
1.	Pin Terminal	0.4T Brass	1	Silver Plated
NO.	Description	Material	Q' TY	Finish

# SHOGYO

DATE	DWN	CHKD	APVD	MANAGER
10.06.2021	王平華			

For Redference  
僅供參考

RoHS&SVHC  
Compliant

PART NAME : DC POWER JACK PART NUMBER:SCD447DCS000B00G VERSION:9.0

TOLERANCE : $\pm 0.3$ mm UNLESS OTHERWISE SPECIFIED UNIT:mm SCALE:1/1

SPECIFICATIONS:  
 Contact Resistance : 30m $\Omega$  max  
 Current Rating : Max 5.0A , 24V DC  
 Insulation Resistance : 100M $\Omega$  min. at DC 500V  
 Dielectric Withstanding Voltage: AC 500V for one minute  
 Remark: ▲ : The Most Important Dimension