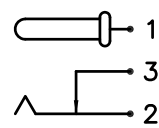
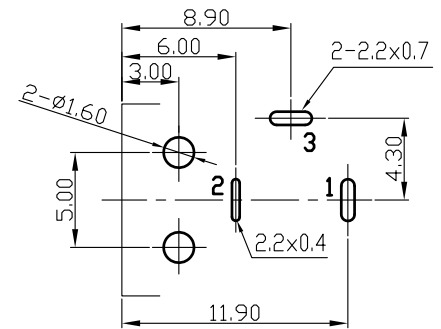
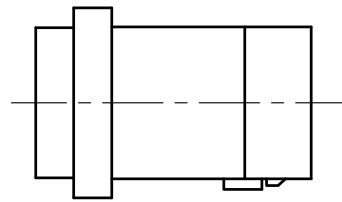
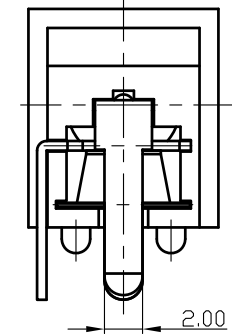
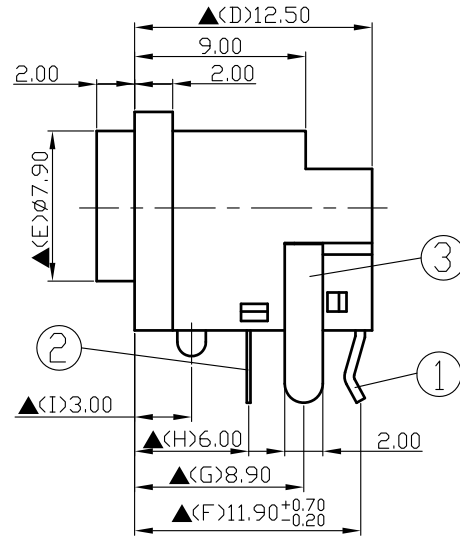
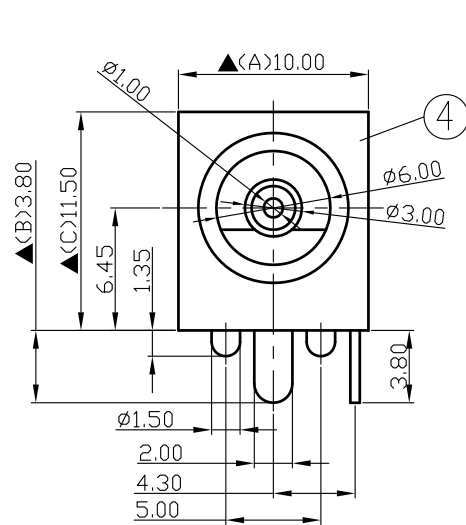


SCHMATIC	
MODEL NO	C



Pin Hole Layout
(Jack Bottom View)

4.	Housing	PBT+15%	1	Black Color
3.	Break Terminal	0.5T Brass	1	Silver Plated
2.	Ring Spring	0.2T Phosphor Bronze	1	Silver Plated
1.	Pin Terminal	0.5T Brass	1	Silver Plated
NO.	Description	Material	Q'TY	Finish

SHOGYO


DATE	DWN	CHKD	APVD	MANAGER
10.07.2021	王平華			

For Redference
僅供參考

RoHS&SVHC
Compliant

PART NAME: DC POWER JACK	PART NUMBER:SCD460ECS000B00G	VERSION:6.0
--------------------------	------------------------------	-------------

SPECIFICATIONS:
 Contact Resistance :30mΩ max
 Current Rating : Max 5.0A ,24VDC
 Insulation Resistance :100MΩ min.at DC500V
 Dielectric Withstand Voltage :AC 500V for one minute
 Remark:▲:The Most Important Dimension

TOLERANCE:±0.3mm UNLESS OTHERWISE SPECIFIED	UNIT:mm		SCALE:1/1
---	---------	---	-----------