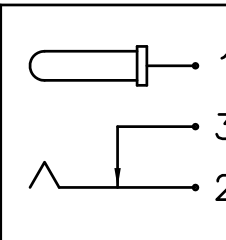
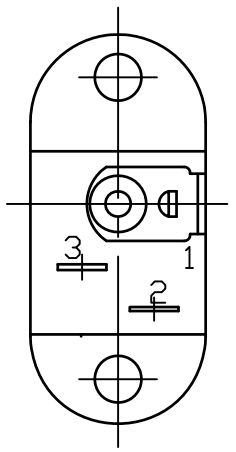
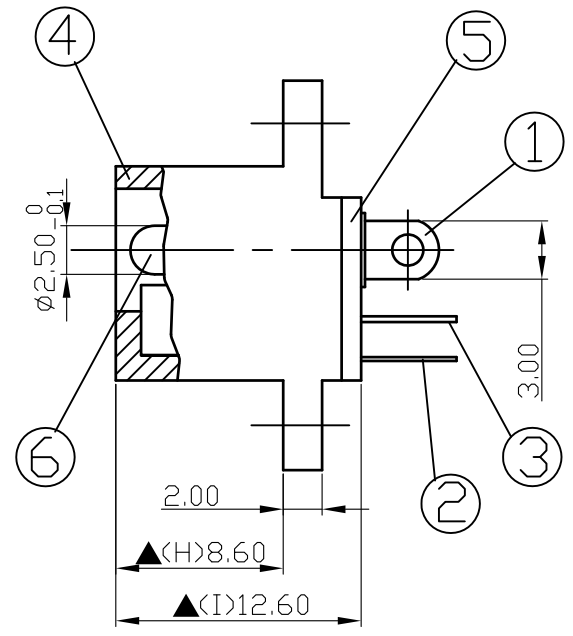
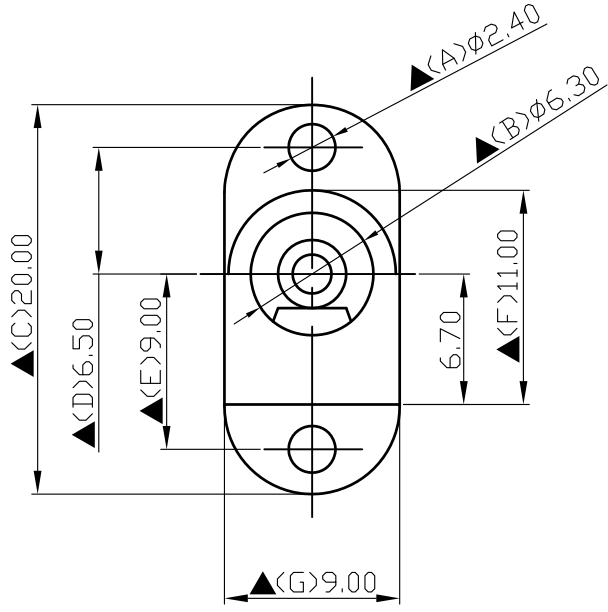


1 2 3 4 5 6 7

A

SCHEMATIC	
MODEL NO	C

B



C

D

6.	Pin(2.5φ)	Brass	1	Nickel Plated
5.	Cover	Bakelite	1	Natural
4.	Housing	POM	1	Black Color
3.	Break Terminal	0.3T Brass	1	Silver Plated
2.	Sleeve Spring	0.2T Phosphor Bronze	1	Silver Plated
1.	Pin Terminal	0.4T Brass	1	Silver Plated
NO.	Description	Material	Q'TY	Finish

E



DATE	DWN	CHKD	APVD	MANAGER
10.06.2021	王平華			

For Redference  
僅供參考

RoHS&SVHC  
Compliant

PART NAME :DC POWER JACK      PART NUMBER: SCD510DCS000B00G      VERSION:6.0

TOLERANCE :±0.3mm UNLESS OTHERWISE SPECIFIED      UNIT:mm        SCALE:1/1

SPECIFICATIONS:  
 Contact Resistance : 30mΩ max  
 Current Rating : Max 5.0A , 24VDC  
 Insulation Resistance : 100MΩ min. at DC 500V  
 Dielectric Withstanding Voltage: AC 500V for one minute  
 Remark: ▲ : The Most Important Dimension

1 2 3 4 5 6 7