



SPECIFICATIONS



CONTACT RATING: 50mA, 24 VDC
 ELECTRIC LIFE: 10,000,000 cycles
 CONTACT RESISTANCE: 50mΩ max. (initial)
 INSULATION RESISTANCE: 10MΩ min. 100VDC
 DIELECTRIC STRENGTH: 250VAC/ 1 min.
 OPERATION TEMPERATURE: -40°C to +160°C (non-illuminated)
 -40°C to +85°C (illuminated)

INDEX

TOGGLE

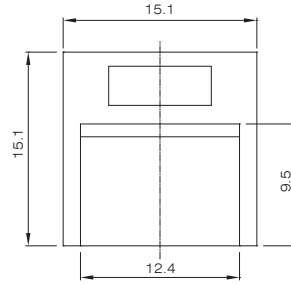
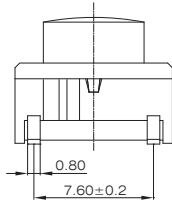
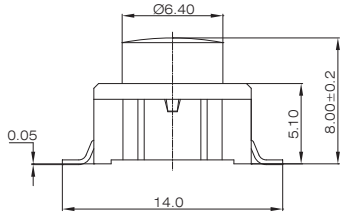
ROCKER

SLIDE

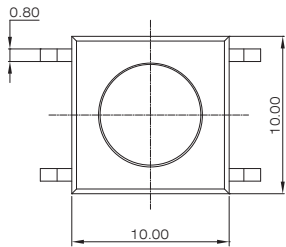
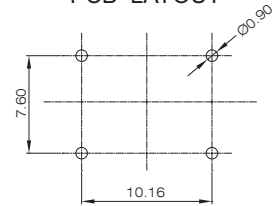
PUSH BUTTON / MICRO

DIP / ROTARY

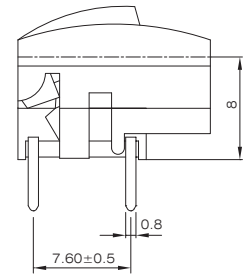
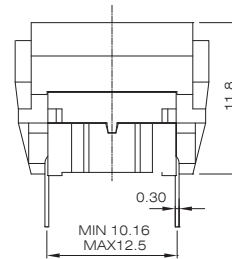
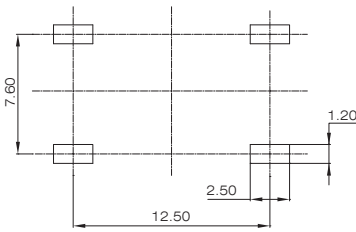
KEY / TACT



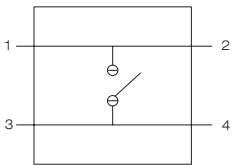
PCB LAYOUT



PCB LAYOUT



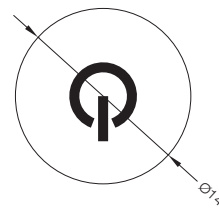
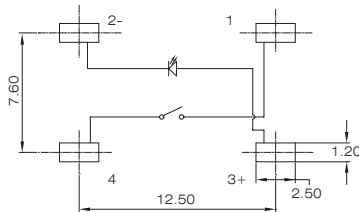
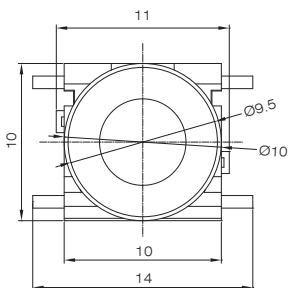
CIRCUIT



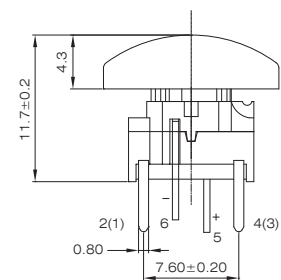
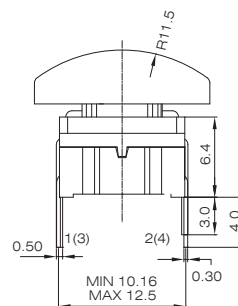
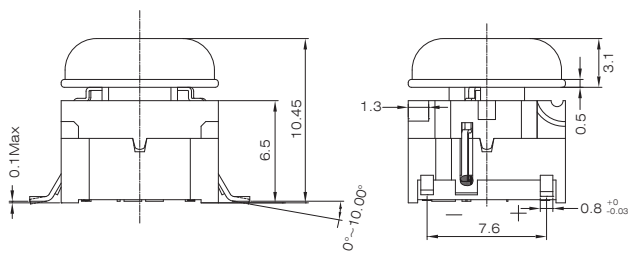
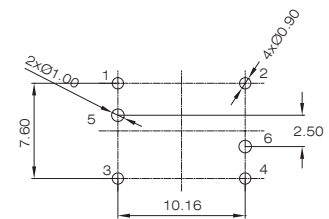
WTM-10-2-M

WTM-10-1-C-T2

PCB layout and Circuit Diagram



PCB LAYOUT



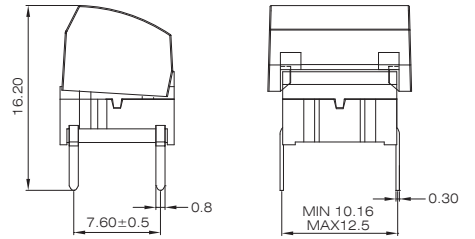
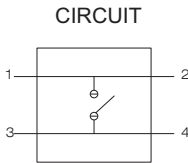
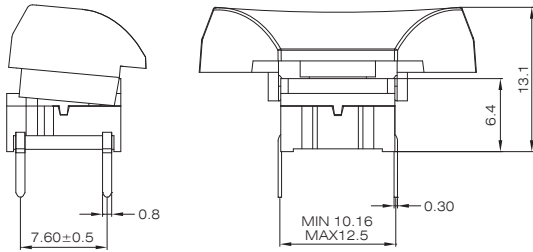
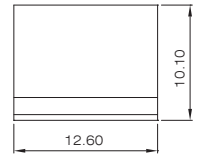
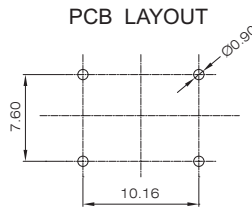
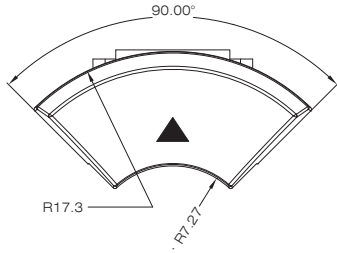
WTML2-10-4-M-X-G-0

WTML1-10-3-C-X-B-2-51



SPECIFICATIONS

CONTACT RATING: 50mA, 24 VDC
ELECTRIC LIFE: 10,000,000 cycles
CONTACT RESISTANCE: 50mΩ max. (initial)
INSULATION RESISTANCE: 10MΩ min. 100VDC
DIELECTRIC STRENGTH: 250VAC/ 1 min.
OPERATION TEMPERATURE: -40°C to +160°C (non-illuminated)
 -40°C to +85°C (illuminated)



WTML1-10-1-C-S-2-50

WTML1-10-1-C-Q1-9

HOW TO ORDER

WTM [] - 10 - [] - [] - [] - [] - [] - [] / [] - [] [] - H - S004

Switch Design Code	
/	Standard body/ flat cover
L1	Standard body/ stepped cover
2	New body/ stepped cover
L2	New body/ flat cover

High (without cap)	
1	6.4
2	8.0
3	10.4
4	8.7

Handle color (WTM/WTM2)	
/	Black
1	White
3	Red

Handle color (WTML1/WTML2)	
/	White
2	Black

Terminal	
M	SMT Type
C	PC Type

LED color	
/	none
1	White
3	Red
5	Yellow
5C	Yellow (height 3mm)
6	Green
7	Blue

Cap	
/	Without cap
B	φ 14
G	φ 10
S	Fan cap
T1	Support without hole
T2	Support with hole
Q1	Fan without Filter
Q2	Fan with Filter

Cap color/Support color	
0	transparent
1	White
2	Black
7	Blue
9	Gray

Operation Life	
10,000,000 cycles	

RoHS	
H	RoHS Compliant

Cap pattern	
/	None
50	Silk screen ▲
50C	laser carving ▲
51	Silk screen Ⓞ
51C	laser carving Ⓞ
52	Silk screen OK