



SPECIFICATIONS

CONTACT RATING: 16 A, 250 V AC
 16(6) A, 250 V AC
 ELECTRIC LIFE: 10,000 cycles
 CONTACT RESISTANCE: 30 mΩ max. (initial)
 INSULATION RESISTANCE: 1,000 MΩ min. 500VDC
 DIELECTRIC STRENGTH: 1,500 VAC/ 1 min.
 OPERATING TEMPERATURE: -40°C to +85°C

How do you build the switches you need!!

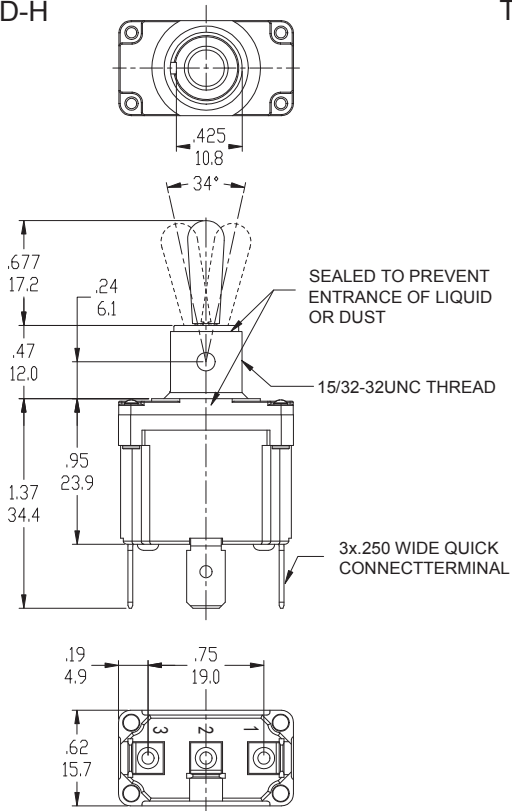
T 6 0 1 3 - - T 1 E B - 1 0 - - H

Switch Function		Locking	Actuator	Contact Material	Agency approval	RoHS code
T6113	SP on-none-on	/ NO Locking	T1 Round	NON No plated	/ Standard	H= ROHS Compliant
T6113A	SP on-none-(on)	A in 3 position	U1 Metal Flatted	Q Silver plated	2P Two terminal	
T6114	SP on-off-on	D out of center	U5 Yellow plastic Flatted	M Nickel plated	2P2 Two terminal	
T6114A	SP (on)-off-(on)	G keyway side				
T6114B	SP on-off-(on)					
T6123	DP on-none-on					
T6123A	DP on-none-(on)					
T6124	DP on-off-on					
T6124A	DP (on)-off-(on)					
T6124B	DP on-off-(on)					
T6143	4P on-none-on					
T6143A	4P on-none-(on)					
T6144	4P on-off-on					
T6144A	4P (on)-off-(on)					
T6144B	4P on-off-(on)					

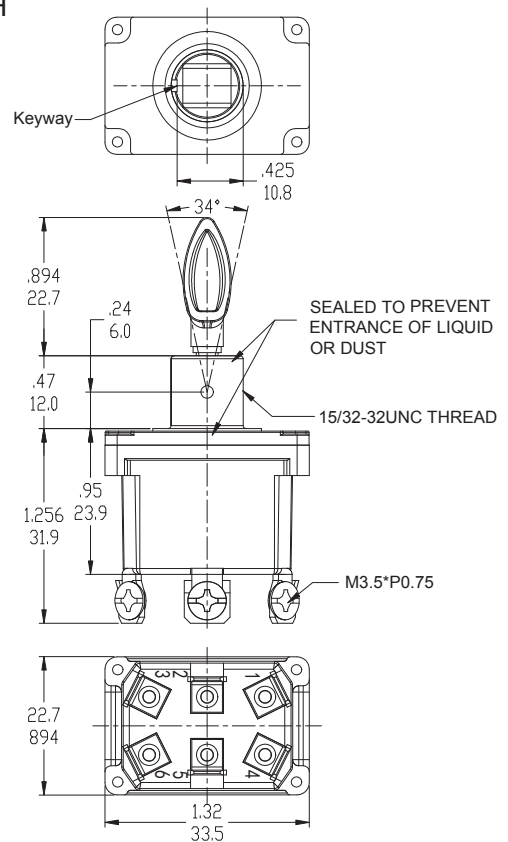
Bushing		Terminal	
E	Standard	B	solder lug
		D	quick connect
		S1	Terminal with screw

Agency approval	
/ 16	none 16(6)A/250VAC

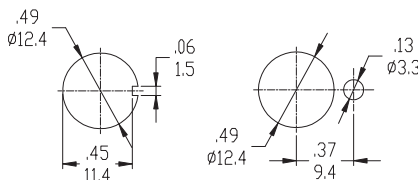
T611X-T1ED-H



T612X-U5ES1-H



PANEL CUT-OUT



INDEX

TOGGLE

ROCKER

SLIDE

PUSH BUTTON / MICRO

ROTARY

KEY / TACT