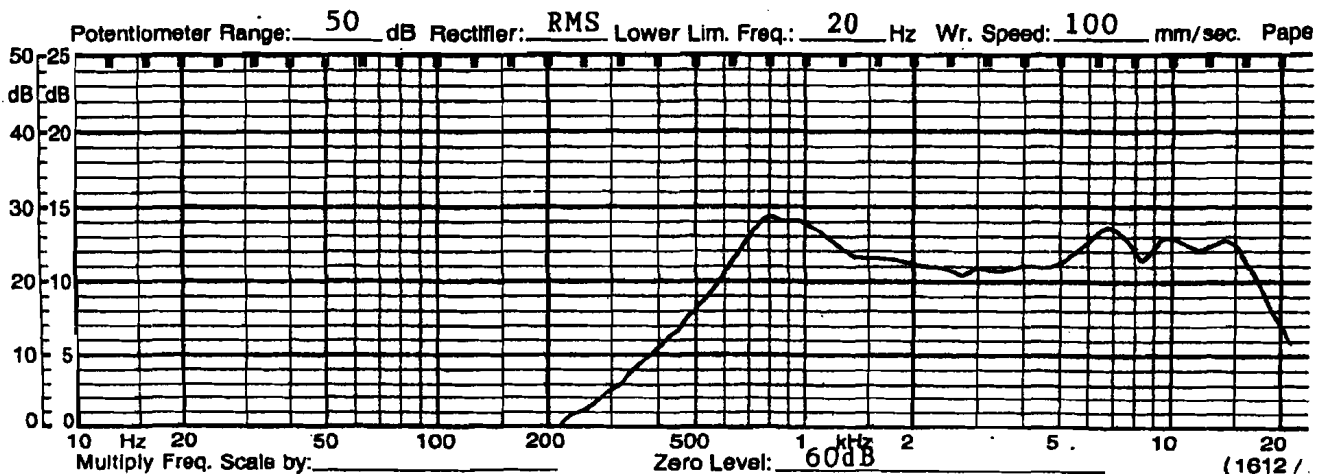


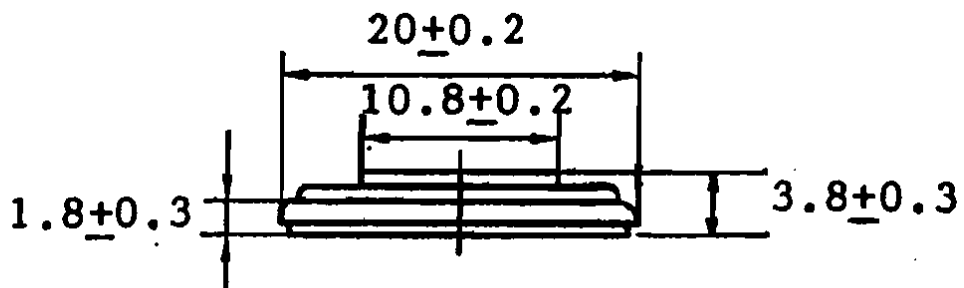
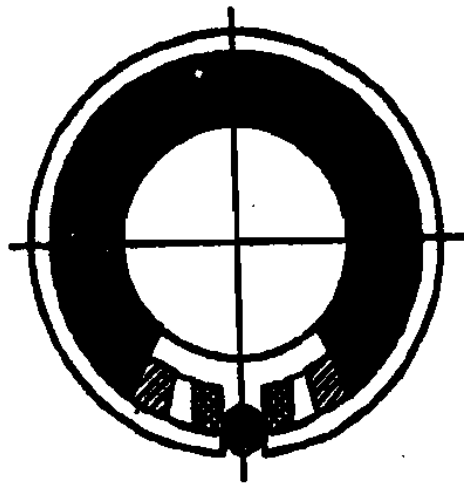
# SHOGYO INTERNATIONAL CORP.

www.shogyo.com

## SPEAKER SPECIFICATIONS

MODEL NO.	GC0201MAX (RoHS)				
1	NOMINAL SIZE	20 mm			
2	IMPEDANCE	8 $\Omega \pm 15\%$ at. 1K Hz 1 V.			
3	RESONANCE FO	750 Hz $\pm 150$ Hz FO Hz 1 V.			
4	OUTPUT S.P.L.	86 dB/w $\pm 3$ dB	0.1 W 50 cm average at		
5	FREQ. RESPONSE	Fo Hz $\sim 20K$ Hz <b>MAX</b> 10dB			
6	INPUT POWER	Rated power 0.25 W Max power 0.5 W			
7	OPERATION	Must be normal at program source 0.5 W			
8	BUZZ, RATTLE, ETC.	Must be normal at Sine Wave 2 V			
9	MAGNET	8.0 x 1.0 mm			
10	FLUX DENSITY	Gauss $\pm 10\%$ total flux max well within			
11	DISTORTION				
12	LOAD TEST	After test meet Item 7 and 8 White noise 0.5 W 24 Hours			
13	OPERATION TEMP.				
14	HEAT TEST	After test meet Item 7 and 8 60 $\pm$ 2°C 20-50 % R.H. 24 Hours			
15	HUMIDITY TEST	After test meet Item 7 and 8 40 $\pm$ 2°C 90-95 % R.H. 24 Hours			





MODEL NO.

**GC0201MAX**

APPROVED

CHECKED

DRAWING